



[Go to Product page](#)

Datasheet for ABIN6742091  
**anti-PACRGL antibody (AA 107-156)**

1 Image

Overview

Quantity:	100 µL
Target:	PACRGL
Binding Specificity:	AA 107-156
Reactivity:	Human, Mouse, Rat, Cow, Dog, Guinea Pig, Horse, Monkey, Bat, Pig
Host:	Rabbit
Clonality:	Polyclonal
Conjugate:	This PACRGL antibody is un-conjugated
Application:	Western Blotting (WB)

Product Details

Immunogen:	Synthetic peptide located between aa107-156 of human PACRGL (Q8N7B6, NP_659485). Percent identity by BLAST analysis: Human, Chimpanzee, Gorilla, Gibbon, Monkey, Galago, Marmoset, Mouse, Rat, Elephant, Dog, Bovine, Bat, Horse, Pig, Guinea pig (100%), Opossum, Turkey, Zebra finch, Chicken (92%), Platypus (85%), Lizard, Xenopus, Frog (84%).  Type of Immunogen: Synthetic peptide
Isotype:	IgG
Specificity:	Human PACRGL
Predicted Reactivity:	Percent identity by BLAST analysis:
Purification:	Immunoaffinity purified

## Target Details

---

Target: PACRGL

Alternative Name: PACRGL ([PACRGL Products](#))

Background: Name/Gene ID: PACRGL

Synonyms: PACRGL, C4orf28, PARK2 co-regulated-like, PACRG-like protein

Gene ID: 133015

NCBI Accession: [NP\\_659485](#)

UniProt: [Q8N7B6](#)

## Application Details

---

Application Notes: Approved: WB (0.2 - 1 µg/mL)

Usage: Western Blot: Suggested dilution at 1.0 µg/mL in 5 % skim milk / PBS buffer, and HRP conjugated anti-Rabbit IgG should be diluted in 1: 50,000 - 100,000 as second antibody. ELISA titer in peptide based assay: 1:1562500.

Comment: Target Species of Antibody: Human

Restrictions: For Research Use only

## Handling

---

Format: Lyophilized

Reconstitution: Distilled water

Concentration: Lot specific

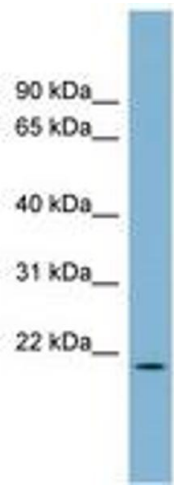
Buffer: Lyophilized from PBS with 2 % sucrose

Handling Advice: Avoid repeat freeze-thaw cycles.

Storage: 4 °C, -20 °C

Storage Comment: Long term: -20°C, the use of 50% glycerol is recommended if storing aliquots in -20°C for long term use (up to 1 year)

Short term (less than 1 week): 4°C. Avoid freeze-thaw cycles.



**Image 1.**