



[Go to Product page](#)

Datasheet for ABIN6742098
anti-VPS37C antibody (AA 35-84)

1 Image

Overview

Quantity:	100 µL
Target:	VPS37C
Binding Specificity:	AA 35-84
Reactivity:	Human, Mouse, Rat, Horse, Pig, Rabbit, Cow, Dog, Monkey, Bat, Hamster
Host:	Rabbit
Clonality:	Polyclonal
Conjugate:	This VPS37C antibody is un-conjugated
Application:	Western Blotting (WB)

Product Details

Immunogen:	Synthetic peptide located between aa35-84 of human VPS37C (A5D8V6, NP_060436). Percent identity by BLAST analysis: Human, Gorilla, Orangutan, Gibbon, Monkey, Marmoset, Mouse, Rat, Hamster, Panda, Dog, Bovine, Bat, Rabbit, Horse, Pig (100%), Elephant, Guinea pig (92%), Galago (84%). Type of Immunogen: Synthetic peptide
Isotype:	IgG
Specificity:	Human VPS37C
Predicted Reactivity:	Percent identity by BLAST analysis: Human, Rat, Dog, Bovine, Horse (100%) Guinea pig (92%).
Purification:	Immunoaffinity purified

Target Details

Target:	VPS37C
Alternative Name:	VPS37C (VPS37C Products)
Background:	Name/Gene ID: VPS37C Synonyms: VPS37C, HVps37C, PML39, Vacuolar protein sorting 37C, ESCRT-I complex subunit VPS37C
Gene ID:	55048
NCBI Accession:	NP_060436
UniProt:	A5D8V6

Application Details

Application Notes:	Approved: WB (0.2 - 1 µg/mL) Usage: Western Blot: Suggested dilution at 1.0 µg/mL in 5 % skim milk / PBS buffer, and HRP conjugated anti-Rabbit IgG should be diluted in 1: 50,000 - 100,000 as second antibody. ELISA titer in peptide based assay: 1:312500.
Comment:	Target Species of Antibody: Human
Restrictions:	For Research Use only

Handling

Format:	Lyophilized
Reconstitution:	Distilled water
Concentration:	Lot specific
Buffer:	Lyophilized from PBS with 2 % sucrose
Handling Advice:	Avoid repeat freeze-thaw cycles.
Storage:	4 °C,-20 °C
Storage Comment:	Long term: -20°C, the use of 50% glycerol is recommended if storing aliquots in -20°C for long term use (up to 1 year) Short term (less than 1 week): 4°C. Avoid freeze-thaw cycles.

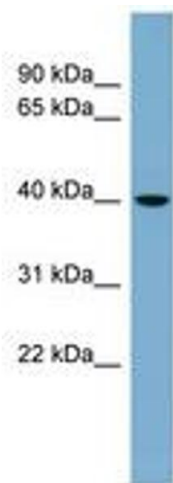


Image 1.