



[Go to Product page](#)

Datasheet for ABIN6742101
anti-RALGPS2 antibody (AA 201-250)

1 Image

Overview

Quantity:	100 µL
Target:	RALGPS2
Binding Specificity:	AA 201-250
Reactivity:	Human, Rabbit, Cow, Dog, Mouse, Rat, Horse, Zebrafish (Danio rerio), Pig, Xenopus laevis
Host:	Rabbit
Clonality:	Polyclonal
Conjugate:	This RALGPS2 antibody is un-conjugated
Application:	Western Blotting (WB)

Product Details

Immunogen:	Synthetic peptide located between aa201-250 of human RALGPS2 (Q86X27-2). Percent identity by BLAST analysis: Human, Chimpanzee, Gorilla, Gibbon, Monkey, Galago, Mouse, Rat, Elephant, Panda, Dog, Bovine, Rabbit, Horse, Pig, Opossum, Xenopus, Stickleback, Zebrafish (100%), Marmoset, Bat, Guinea pig, Platypus (92%), Turkey, Chicken (85%). Type of Immunogen: Synthetic peptide
Isotype:	IgG
Specificity:	Human RALGPS2
Predicted Reactivity:	Percent identity by BLAST analysis: Human, Mouse, Rat, Dog, Bovine, Rabbit, Horse, Pig, Zebrafish (100%).
Purification:	Immunoaffinity purified

Target Details

Target:	RALGPS2
Alternative Name:	RALGPS2 (RALGPS2 Products)
Background:	Name/Gene ID: RALGPS2 Synonyms: RALGPS2, DJ595C2.1, KIAA0351, Ral-A exchange factor RalGPS2, RalA exchange factor RalGPS2
Gene ID:	55103
UniProt:	Q86X27

Application Details

Application Notes:	Approved: WB (0.2 - 1 µg/mL) Usage: Western Blot: Suggested dilution at 1.0 µg/mL in 5 % skim milk / PBS buffer, and HRP conjugated anti-Rabbit IgG should be diluted in 1: 50,000 - 100,000 as second antibody. ELISA titer in peptide based assay: 1:312500.
Comment:	Target Species of Antibody: Human
Restrictions:	For Research Use only

Handling

Format:	Lyophilized
Reconstitution:	Distilled water
Concentration:	Lot specific
Buffer:	Lyophilized from PBS with 2 % sucrose
Handling Advice:	Avoid repeat freeze-thaw cycles.
Storage:	4 °C, -20 °C
Storage Comment:	Long term: -20°C, the use of 50% glycerol is recommended if storing aliquots in -20°C for long term use (up to 1 year) Short term (less than 1 week): 4°C. Avoid freeze-thaw cycles.

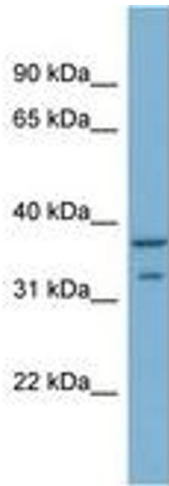


Image 1.