



[Go to Product page](#)

Datasheet for ABIN6742102
anti-WDR55 antibody (AA 179-228)

1 Image

Overview

Quantity:	100 µL
Target:	WDR55
Binding Specificity:	AA 179-228
Reactivity:	Human, Mouse, Rat, Cow, Guinea Pig, Horse, Rabbit, Zebrafish (Danio rerio), Bat, Hamster, Monkey, Pig
Host:	Rabbit
Clonality:	Polyclonal
Conjugate:	This WDR55 antibody is un-conjugated
Application:	Western Blotting (WB)

Product Details

Immunogen:	Synthetic peptide located between aa179-228 of human WDR55 (Q9H6Y2, NP_060176). Percent identity by BLAST analysis: Human, Gorilla, Orangutan, Gibbon, Monkey, Galago, Marmoset, Mouse, Rat, Hamster, Elephant, Bovine, Bat, Rabbit, Horse, Pig, Guinea pig, Turkey (100%), Opossum, Zebra finch, Xenopus, Stickleback, Medaka (92%), Lizard, Zebrafish (85%). Type of Immunogen: Synthetic peptide
Isotype:	IgG
Specificity:	Human WDR55
Predicted Reactivity:	Percent identity by BLAST analysis: Human, Mouse, Rat, Bovine, Rabbit (100%) Zebrafish (85%).
Purification:	Immunoaffinity purified

Target Details

Target:	WDR55
Alternative Name:	WDR55 (WDR55 Products)
Background:	Name/Gene ID: WDR55 Synonyms: WDR55, WD repeat domain 55
Gene ID:	54853
NCBI Accession:	NP_060176
UniProt:	Q9H6Y2

Application Details

Application Notes:	Approved: WB (0.2 - 1 µg/mL) Usage: Western Blot: Suggested dilution at 1.0 µg/mL in 5 % skim milk / PBS buffer, and HRP conjugated anti-Rabbit IgG should be diluted in 1: 50,000 - 100,000 as second antibody. ELISA titer in peptide based assay: 1:1562500.
Comment:	Target Species of Antibody: Human
Restrictions:	For Research Use only

Handling

Format:	Lyophilized
Reconstitution:	Distilled water
Concentration:	Lot specific
Buffer:	Lyophilized from PBS with 2 % sucrose
Handling Advice:	Avoid repeat freeze-thaw cycles.
Storage:	4 °C, -20 °C
Storage Comment:	Long term: -20°C, the use of 50% glycerol is recommended if storing aliquots in -20°C for long term use (up to 1 year) Short term (less than 1 week): 4°C. Avoid freeze-thaw cycles.

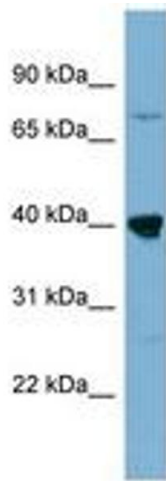


Image 1.