



[Go to Product page](#)

Datasheet for ABIN6742103
anti-LYAR antibody (AA 179-228)

1 Image

Overview

Quantity:	100 µL
Target:	LYAR
Binding Specificity:	AA 179-228
Reactivity:	Please inquire
Host:	Rabbit
Clonality:	Polyclonal
Conjugate:	This LYAR antibody is un-conjugated
Application:	Western Blotting (WB)

Product Details

Immunogen:	Synthetic peptide located between aa179-228 of human LYAR (Q9NX58, NP_060286). Percent identity by BLAST analysis: Human, Gibbon, Monkey, Mouse, Rat, Panda, Bat, Opossum (100%), Horse (92%), Gorilla (91%), Elephant (90%), Marmoset, Bovine, Platypus (84%). Type of Immunogen: Synthetic peptide
Isotype:	IgG
Specificity:	Human LYAR
Predicted Reactivity:	Percent identity by BLAST analysis: Human, Mouse, Rat (100%) Horse (92%) Bovine (84%).
Purification:	Immunoaffinity purified

Target Details

Target:	LYAR
Alternative Name:	LYAR (LYAR Products)
Target Type:	Antibody
Background:	Name/Gene ID: LYAR Synonyms: LYAR, Ly1 antibody reactive, ZC2HC2, ZLYAR
Gene ID:	55646
NCBI Accession:	NP_060286
UniProt:	Q9NX58

Application Details

Application Notes:	Approved: WB (0.2 - 1 µg/mL) Usage: Western Blot: Suggested dilution at 1.0 µg/mL in 5 % skim milk / PBS buffer, and HRP conjugated anti-Rabbit IgG should be diluted in 1: 50,000 - 100,000 as second antibody. ELISA titer in peptide based assay: 1:1562500.
Comment:	Target Species of Antibody: Human
Restrictions:	For Research Use only

Handling

Format:	Lyophilized
Reconstitution:	Distilled water
Concentration:	Lot specific
Buffer:	Lyophilized from PBS with 2 % sucrose
Handling Advice:	Avoid repeat freeze-thaw cycles.
Storage:	4 °C,-20 °C
Storage Comment:	Long term: -20°C, the use of 50% glycerol is recommended if storing aliquots in -20°C for long term use (up to 1 year) Short term (less than 1 week): 4°C. Avoid freeze-thaw cycles.

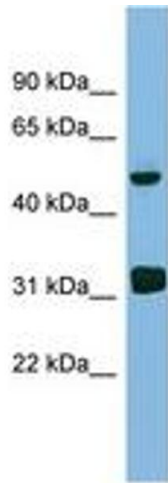


Image 1.