



[Go to Product page](#)

Datasheet for ABIN6742113  
**anti-PPIL3 antibody (AA 35-84)**

1 Image

Overview

Quantity:	100 µL
Target:	PPIL3
Binding Specificity:	AA 35-84
Reactivity:	Human
Host:	Rabbit
Clonality:	Polyclonal
Conjugate:	This PPIL3 antibody is un-conjugated
Application:	Western Blotting (WB)

Product Details

Immunogen:	Synthetic peptide located between aa35-84 of human PPIL3 (Q9H2H8-2, NP_115861). Percent identity by BLAST analysis: Human (100%), Monkey (92%).  Type of Immunogen: Synthetic peptide
Isotype:	IgG
Specificity:	Human PPIL3
Predicted Reactivity:	Percent identity by BLAST analysis: Human (100%).
Purification:	Immunoaffinity purified

Target Details

Target:	PPIL3
---------	-------

## Target Details

---

Alternative Name: PPIL3 ([PPIL3 Products](#))

Background: Name/Gene ID: PPIL3

Synonyms: PPIL3, Cyclophilin J, Cyclophilin-like protein PPIL3, Cyclophilin-like protein 3, CYPJ, PPlase-like protein 3, Rotamase PPIL3, PPlase

Gene ID: 53938

NCBI Accession: [NP\\_115861](#)

Pathways: [SARS-CoV-2 Protein Interactome](#)

## Application Details

---

Application Notes: Approved: WB (0.2 - 1 µg/mL)

Usage: Western Blot: Suggested dilution at 1.0 µg/mL in 5 % skim milk / PBS buffer, and HRP conjugated anti-Rabbit IgG should be diluted in 1: 50,000 - 100,000 as second antibody. ELISA titer in peptide based assay: 1:312500.

Comment: Target Species of Antibody: Human

Restrictions: For Research Use only

## Handling

---

Format: Lyophilized

Reconstitution: Distilled water

Concentration: Lot specific

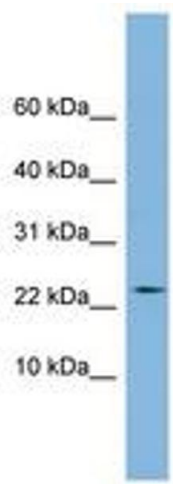
Buffer: Lyophilized from PBS with 2 % sucrose

Handling Advice: Avoid repeat freeze-thaw cycles.

Storage: 4 °C, -20 °C

Storage Comment: Long term: -20°C, the use of 50% glycerol is recommended if storing aliquots in -20°C for long term use (up to 1 year)

Short term (less than 1 week): 4°C. Avoid freeze-thaw cycles.



**Image 1.**