



[Go to Product page](#)

Datasheet for ABIN6742117
anti-HSF5 antibody (C-Term)

1 Image

Overview

Quantity:	100 µL
Target:	HSF5
Binding Specificity:	C-Term
Reactivity:	Human, Guinea Pig
Host:	Rabbit
Clonality:	Polyclonal
Conjugate:	This HSF5 antibody is un-conjugated
Application:	Western Blotting (WB)

Product Details

Immunogen:	Synthetic peptide from C-Terminus of human HSF5 (Q4G112, NP_001073908). Percent identity by BLAST analysis: Human, Chimpanzee (100%), Gorilla, Galago, Mouse, Rat, Dog, Bat, Rabbit, Horse, Pig, Opossum (92%), Turkey, Chicken (90%), Gibbon, Guinea pig (85%). Type of Immunogen: Synthetic peptide
Isotype:	IgG
Specificity:	Human HSF5
Predicted Reactivity:	Percent identity by BLAST analysis: Human (100%) Mouse, Dog, Rabbit, Horse, Pig (92%) Chicken (90%) Guinea pig (85%).
Purification:	Immunoaffinity purified

Target Details

Target: HSF5

Alternative Name: HSTF 5 / HSF5 ([HSF5 Products](#))

Background: Name/Gene ID: HSF5

Synonyms: HSF5, Heat shock factor protein 5, HSF 5, HSTF5, HSTF 5

Gene ID: 124535

NCBI Accession: [NP_001073908](#)

UniProt: [Q4G112](#)

Application Details

Application Notes: Approved: WB (0.2 - 1 µg/mL)

Usage: Western Blot: Suggested dilution at 1.0 µg/mL in 5 % skim milk / PBS buffer, and HRP conjugated anti-Rabbit IgG should be diluted in 1: 50,000 - 100,000 as second antibody. ELISA titer in peptide based assay: 1:62500.

Comment: Target Species of Antibody: Human

Restrictions: For Research Use only

Handling

Format: Lyophilized

Reconstitution: Distilled water

Concentration: Lot specific

Buffer: Lyophilized from PBS with 2 % sucrose

Handling Advice: Avoid repeat freeze-thaw cycles.

Storage: 4 °C, -20 °C

Storage Comment: Long term: -20°C, the use of 50% glycerol is recommended if storing aliquots in -20°C for long term use (up to 1 year)

Short term (less than 1 week): 4°C. Avoid freeze-thaw cycles.

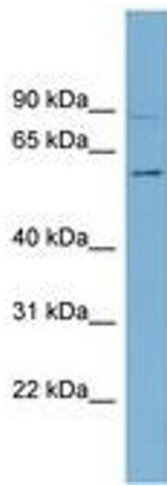


Image 1.