



[Go to Product page](#)

Datasheet for ABIN6742138
anti-C7orf29 antibody (AA 107-156)

1 Image

Overview

Quantity:	100 µL
Target:	C7orf29 (C7ORF29)
Binding Specificity:	AA 107-156
Reactivity:	Human
Host:	Rabbit
Clonality:	Polyclonal
Conjugate:	This C7orf29 antibody is un-conjugated
Application:	Western Blotting (WB)

Product Details

Immunogen:	Synthetic peptide located between aa107-156 of human ZBED6CL (Q96FA7, NP_612443). Percent identity by BLAST analysis: Human, Gorilla (100%). Type of Immunogen: Synthetic peptide
Isotype:	IgG
Specificity:	Human C7orf29
Predicted Reactivity:	Percent identity by BLAST analysis:
Purification:	Immunoaffinity purified

Target Details

Target:	C7orf29 (C7ORF29)
---------	-------------------

Target Details

Alternative Name: ZBED6CL / C7orf29 ([C7ORF29 Products](#))

Background: Name/Gene ID: ZBED6CL

Synonyms: ZBED6CL, C7orf29

Gene ID: 113763

NCBI Accession: [NP_612443](#)

UniProt: [Q96FA7](#)

Application Details

Application Notes: Approved: WB (0.2 - 1 µg/mL)

Usage: Western Blot: Suggested dilution at 1.0 µg/mL in 5 % skim milk / PBS buffer, and HRP conjugated anti-Rabbit IgG should be diluted in 1: 50,000 - 100,000 as second antibody. ELISA titer in peptide based assay: 1:12500.

Comment: Target Species of Antibody: Human

Restrictions: For Research Use only

Handling

Format: Lyophilized

Reconstitution: Distilled water

Concentration: Lot specific

Buffer: Lyophilized from PBS with 2 % sucrose

Handling Advice: Avoid repeat freeze-thaw cycles.

Storage: 4 °C, -20 °C

Storage Comment: Long term: -20°C, the use of 50% glycerol is recommended if storing aliquots in -20°C for long term use (up to 1 year)

Short term (less than 1 week): 4°C. Avoid freeze-thaw cycles.

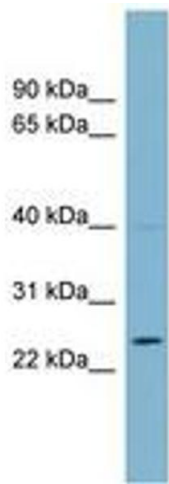


Image 1.