



Datasheet for ABIN6742146  
**anti-BTG4 antibody (AA 71-120)**



[Go to Product page](#)

1 Image

Overview

Quantity:	100 µL
Target:	BTG4
Binding Specificity:	AA 71-120
Reactivity:	Human, Mouse, Rat, Pig, Rabbit, Dog, Horse, Monkey
Host:	Rabbit
Clonality:	Polyclonal
Conjugate:	This BTG4 antibody is un-conjugated
Application:	Western Blotting (WB)

Product Details

Immunogen:	Synthetic peptide located between aa71-120 of human BTG4 (Q9NY30, NP_060059). Percent identity by BLAST analysis: Human, Gorilla, Gibbon, Monkey, Elephant, Dog, Rabbit, Horse, Pig (100%), Galago, Panda, Bovine, Bat (92%), Marmoset, Mouse, Rat, Opossum, Turkey, Chicken, Platypus, Xenopus (85%).  Type of Immunogen: Synthetic peptide
Isotype:	IgG
Specificity:	Human BTG4
Predicted Reactivity:	Percent identity by BLAST analysis: Human, Dog, Rabbit, Horse, Pig (100%) Bovine (92%) Mouse, Rat, Chicken (85%).
Purification:	Immunoaffinity purified

## Target Details

---

Target:	BTG4
Alternative Name:	BTG4 ( <a href="#">BTG4 Products</a> )
Background:	Name/Gene ID: BTG4  Synonyms: BTG4, B-cell translocation gene 4, BTG family member 4, Protein BTG4, Protein PC3b, PC3B
Gene ID:	54766
NCBI Accession:	<a href="#">NP_060059</a>
UniProt:	<a href="#">Q9NY30</a>

## Application Details

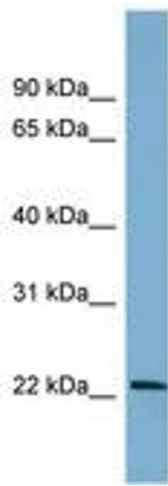
---

Application Notes:	Approved: WB (0.2 - 1 µg/mL)  Usage: Western Blot: Suggested dilution at 1.0 µg/mL in 5 % skim milk / PBS buffer, and HRP conjugated anti-Rabbit IgG should be diluted in 1: 50,000 - 100,000 as second antibody. ELISA titer in peptide based assay: 1:312500.
Comment:	Target Species of Antibody: Human
Restrictions:	For Research Use only

## Handling

---

Format:	Lyophilized
Reconstitution:	Distilled water
Concentration:	Lot specific
Buffer:	Lyophilized from PBS with 2 % sucrose
Handling Advice:	Avoid repeat freeze-thaw cycles.
Storage:	4 °C,-20 °C
Storage Comment:	Long term: -20°C, the use of 50% glycerol is recommended if storing aliquots in -20°C for long term use (up to 1 year)  Short term (less than 1 week): 4°C. Avoid freeze-thaw cycles.



**Image 1.**