



Datasheet for ABIN6742155
anti-TTC17 antibody (AA 107-156)



[Go to Product page](#)

1 Image

Overview

Quantity:	100 µL
Target:	TTC17
Binding Specificity:	AA 107-156
Reactivity:	Human, Cow, Dog, Horse, Mouse, Pig, Rabbit, Rat, Bat, Monkey
Host:	Rabbit
Clonality:	Polyclonal
Conjugate:	This TTC17 antibody is un-conjugated
Application:	Western Blotting (WB)

Product Details

Immunogen:	Synthetic peptide located between aa107-156 of human TTC17 (Q96AE7, NP_060729). Percent identity by BLAST analysis: Human, Chimpanzee, Gorilla, Gibbon, Monkey, Galago, Marmoset, Elephant, Panda, Dog, Bovine, Bat, Rabbit, Horse, Pig (100%), Hamster, Opossum, Guinea pig, Turkey, Zebra finch, Chicken (92%), Lizard (91%), Mouse (85%), Xenopus (83%), Rat (78%). Type of Immunogen: Synthetic peptide
Isotype:	IgG
Specificity:	Human TTC17
Predicted Reactivity:	Percent identity by BLAST analysis: Human, Dog, Bovine, Rabbit, Horse, Pig (100%) Chicken (92%) Mouse (85%).
Purification:	Immunoaffinity purified

Target Details

Target:	TTC17
Alternative Name:	TTC17 (TTC17 Products)
Background:	Name/Gene ID: TTC17 Synonyms: TTC17, TPR repeat protein 17
Gene ID:	55761
NCBI Accession:	NP_060729
UniProt:	Q96AE7

Application Details

Application Notes:	Approved: WB (0.2 - 1 µg/mL) Usage: Western Blot: Suggested dilution at 1.0 µg/mL in 5 % skim milk / PBS buffer, and HRP conjugated anti-Rabbit IgG should be diluted in 1: 50,000 - 100,000 as second antibody. ELISA titer in peptide based assay: 1:312500.
Comment:	Target Species of Antibody: Human
Restrictions:	For Research Use only

Handling

Format:	Lyophilized
Reconstitution:	Distilled water
Concentration:	Lot specific
Buffer:	Lyophilized from PBS with 2 % sucrose
Handling Advice:	Avoid repeat freeze-thaw cycles.
Storage:	4 °C, -20 °C
Storage Comment:	Long term: -20°C, the use of 50% glycerol is recommended if storing aliquots in -20°C for long term use (up to 1 year) Short term (less than 1 week): 4°C. Avoid freeze-thaw cycles.

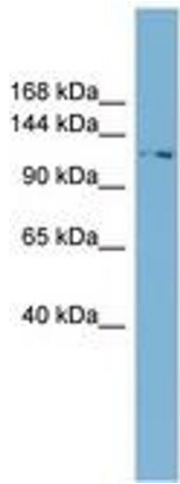


Image 1.