



[Go to Product page](#)

Datasheet for ABIN6742177  
**anti-SIRT4 antibody (AA 35-84)**

1 Image

### Overview

Quantity:	100 µL
Target:	SIRT4
Binding Specificity:	AA 35-84
Reactivity:	Human, Mouse, Rat, Cow, Dog, Pig, Horse, Rabbit, Sheep, Drosophila melanogaster, Xenopus laevis, Chicken
Host:	Rabbit
Clonality:	Polyclonal
Conjugate:	This SIRT4 antibody is un-conjugated
Application:	Western Blotting (WB)

### Product Details

Immunogen:	Synthetic peptide located between aa35-84 of human SIRT4 (Q9Y6E7, NP_036372). Percent identity by BLAST analysis: Human, Chimpanzee, Gorilla, Gibbon, Galago, Mouse, Rat, Sheep, Elephant, Dog, Bovine, Rabbit, Horse, Pig, Turkey, Zebra finch, Chicken, Platypus, Xenopus, Stickleback, Drosophila, Rice (100%), Marmoset, Guinea pig, Beetle (92%).  Type of Immunogen: Synthetic peptide
Specificity:	Human SIRT4
Predicted Reactivity:	Percent identity by BLAST analysis: Human, Mouse, Rat, Sheep, Dog, Bovine, Rabbit, Pig, Chicken, Xenopus (100%).
Purification:	Immunoaffinity purified

## Target Details

---

Target:	SIRT4
Alternative Name:	SIRT4 / Sirtuin 4 ( <a href="#">SIRT4 Products</a> )
Background:	Name/Gene ID: SIRT4 Family: ADP-Ribosyltransferase  Synonyms: SIRT4, Sir2-like 4, SIR2-like protein 4, Sirtuin 4, Sirtuin type 4, SIR2L4
Gene ID:	23409
NCBI Accession:	<a href="#">NP_036372</a>
UniProt:	<a href="#">Q9Y6E7</a>
Pathways:	<a href="#">Negative Regulation of Hormone Secretion</a>

## Application Details

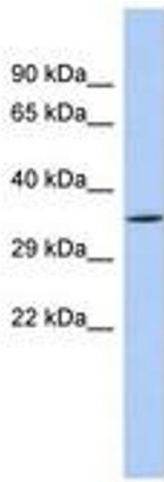
---

Application Notes:	Approved: WB (0.2 - 1 µg/mL)  Usage: Western Blot: Suggested dilution at 1 µg/mL in 5 % skim milk / PBS buffer, and HRP conjugated anti-Rabbit IgG should be diluted in 1: 50,000 - 100,000 as secondary antibody.
Comment:	Target Species of Antibody: Human
Restrictions:	For Research Use only

## Handling

---

Format:	Lyophilized
Reconstitution:	Distilled water
Concentration:	Lot specific
Buffer:	Lyophilized from PBS with 2 % sucrose
Handling Advice:	Avoid repeat freeze-thaw cycles.
Storage:	4 °C,-20 °C
Storage Comment:	Long term: -20°C, the use of 50% glycerol is recommended if storing aliquots in -20°C for long term use (up to 1 year)  Short term (less than 1 week): 4°C. Avoid freeze-thaw cycles.



**Image 1.**