



[Go to Product page](#)

Datasheet for ABIN6742179

anti-FIZ1 antibody (AA 215-264)

1 Image

Overview

| | |
|----------------------|--|
| Quantity: | 100 µL |
| Target: | FIZ1 |
| Binding Specificity: | AA 215-264 |
| Reactivity: | Human, Mouse, Dog, Rat, Cow, Monkey, Bat |
| Host: | Rabbit |
| Clonality: | Polyclonal |
| Conjugate: | This FIZ1 antibody is un-conjugated |
| Application: | Western Blotting (WB) |

Product Details

| | |
|-----------------------|---|
| Immunogen: | Synthetic peptide located between aa215-264 of human FIZ1 (Q96SL8, NP_116225). Percent identity by BLAST analysis: Human, Chimpanzee, Gorilla, Monkey, Bovine, Bat (100%), Dog (85%), Mouse, Rat (78%). Type of Immunogen: Synthetic peptide |
| Specificity: | Human FIZ1 |
| Predicted Reactivity: | Percent identity by BLAST analysis: Human, Bovine (100%) Dog (85%). |
| Purification: | Immunoaffinity purified |

Target Details

| | |
|---------|------|
| Target: | FIZ1 |
|---------|------|

Target Details

Alternative Name: FIZ1 ([FIZ1 Products](#))

Background: Name/Gene ID: FIZ1

Synonyms: FIZ1, FLT3-interacting zinc finger 1, Zinc finger protein 798, ZNF798

Gene ID: 84922

NCBI Accession: [NP_116225](#)

UniProt: [Q96SL8](#)

Application Details

Application Notes: Approved: WB (0.2 - 1 µg/mL)

Usage: Western Blot: Suggested dilution at 1 µg/mL in 5 % skim milk / PBS buffer, and HRP conjugated anti-Rabbit IgG should be diluted in 1: 50,000 - 100,000 as secondary antibody.

Comment: Target Species of Antibody: Human

Restrictions: For Research Use only

Handling

Format: Lyophilized

Reconstitution: Distilled water

Concentration: Lot specific

Buffer: Lyophilized from PBS with 2 % sucrose

Handling Advice: Avoid repeat freeze-thaw cycles.

Storage: 4 °C, -20 °C

Storage Comment: Long term: -20°C, the use of 50% glycerol is recommended if storing aliquots in -20°C for long term use (up to 1 year)

Short term (less than 1 week): 4°C. Avoid freeze-thaw cycles.

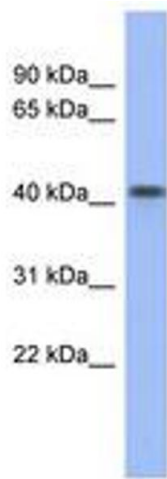


Image 1.