



[Go to Product page](#)

Datasheet for ABIN6742180  
**anti-MINA antibody (AA 107-156)**

1 Image

Overview

Quantity:	100 µL
Target:	MINA
Binding Specificity:	AA 107-156
Reactivity:	Human, Rabbit, Dog, Cow, Monkey
Host:	Rabbit
Clonality:	Polyclonal
Conjugate:	This MINA antibody is un-conjugated
Application:	Western Blotting (WB)

Product Details

Immunogen:	Synthetic peptide located between aa107-156 of human MINA (Q8IUFG, NP_694822). Percent identity by BLAST analysis: Human, Chimpanzee, Gorilla, Orangutan, Gibbon, Monkey, Galago, Marmoset, Rabbit (100%), Mouse, Rat, Bat, Horse, Guinea pig (92%), Bovine, Elephant (85%).  Type of Immunogen: Synthetic peptide
Specificity:	Human MINA
Predicted Reactivity:	Percent identity by BLAST analysis: Human (100%) Mouse, Rat, Horse (92%) Bovine (85%).
Purification:	Immunoaffinity purified

Target Details

Target:	MINA
---------	------

## Target Details

---

Alternative Name: MINA / MINA53 ([MINA Products](#))

Background: Name/Gene ID: MINA

Synonyms: MINA, MYC-induced nuclear antigen, NO52, MINA53, MYC induced nuclear antigen, MDIG, Nucleolar protein 52

Gene ID: 84864

NCBI Accession: [NP\\_694822](#)

UniProt: [Q8IUF8](#)

## Application Details

---

Application Notes: Approved: WB (0.2 - 1 µg/mL)

Usage: Western Blot: Suggested dilution at 1 µg/mL in 5 % skim milk / PBS buffer, and HRP conjugated anti-Rabbit IgG should be diluted in 1: 50,000 - 100,000 as secondary antibody.

Comment: Target Species of Antibody: Human

Restrictions: For Research Use only

## Handling

---

Format: Lyophilized

Reconstitution: Distilled water

Concentration: Lot specific

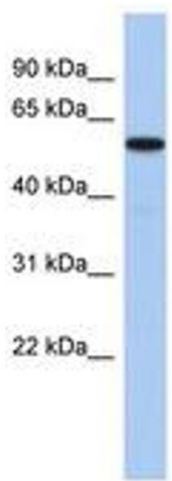
Buffer: Lyophilized from PBS with 2 % sucrose

Handling Advice: Avoid repeat freeze-thaw cycles.

Storage: 4 °C, -20 °C

Storage Comment: Long term: -20°C, the use of 50% glycerol is recommended if storing aliquots in -20°C for long term use (up to 1 year)

Short term (less than 1 week): 4°C. Avoid freeze-thaw cycles.



**Image 1.**