



[Go to Product page](#)

Datasheet for ABIN6742202

anti-Homeobox C5 antibody (AA 143-192)

1 Image

Overview

Quantity:	100 µL
Target:	Homeobox C5 (HOXC5)
Binding Specificity:	AA 143-192
Reactivity:	Human, Mouse, Rat, Cow, Dog, Guinea Pig, Horse, Bat, Hamster, Pig, Monkey, Xenopus laevis
Host:	Rabbit
Clonality:	Polyclonal
Conjugate:	This Homeobox C5 antibody is un-conjugated
Application:	Western Blotting (WB)

Product Details

Immunogen:	Synthetic peptide located between aa143-192 of human HOXC5 (Q00444, NP_061826). Percent identity by BLAST analysis: Human, Chimpanzee, Gorilla, Gibbon, Monkey, Galago, Mouse, Rat, Hamster, Elephant, Panda, Dog, Bovine, Bat, Horse, Pig, Guinea pig, Xenopus (100%), Lizard, Salmon, Zebrafish (92%), Stickleback, Medaka (85%), Pufferfish (84%). Type of Immunogen: Synthetic peptide
Specificity:	Human HOXC5
Predicted Reactivity:	Percent identity by BLAST analysis: Rat, Dog, Bovine, Pig, Xenopus (100%) Zebrafish (92%).
Purification:	Immunoaffinity purified

Target Details

Target:	Homeobox C5 (HOXC5)
Alternative Name:	HOXC5 (HOXC5 Products)
Background:	Name/Gene ID: HOXC5 Synonyms: HOXC5, CP11, Homeobox protein CP11, Homeobox protein Hox-3D, Homeobox C5, Homeobox protein Hox-C5, HOX3D, Homeobox C5, HOX3
Gene ID:	3222
NCBI Accession:	NP_061826
UniProt:	Q00444

Application Details

Application Notes:	Approved: WB (0.2 - 1 µg/mL) Usage: Western Blot: Suggested dilution at 1 µg/mL in 5 % skim milk / PBS buffer, and HRP conjugated anti-Rabbit IgG should be diluted in 1: 50,000 - 100,000 as secondary antibody.
Comment:	Target Species of Antibody: Human
Restrictions:	For Research Use only

Handling

Format:	Lyophilized
Reconstitution:	Distilled water
Concentration:	Lot specific
Buffer:	Lyophilized from PBS with 2 % sucrose
Handling Advice:	Avoid repeat freeze-thaw cycles.
Storage:	4 °C, -20 °C
Storage Comment:	Long term: -20°C, the use of 50% glycerol is recommended if storing aliquots in -20°C for long term use (up to 1 year) Short term (less than 1 week): 4°C. Avoid freeze-thaw cycles.

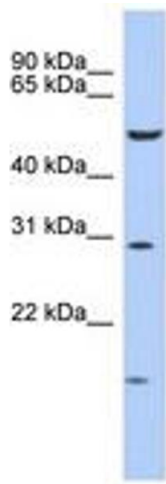


Image 1.