

Datasheet for ABIN6742220  
**anti-NK2 Homeobox 5 antibody (AA 72-121)**



[Go to Product page](#)

1 Image

## Overview

Quantity:	100 µL
Target:	NK2 Homeobox 5 (NKX2-5)
Binding Specificity:	AA 72-121
Reactivity:	Human, Rat, Cow, Dog, Rabbit, Guinea Pig, Monkey
Host:	Rabbit
Clonality:	Polyclonal
Conjugate:	This NK2 Homeobox 5 antibody is un-conjugated
Application:	Western Blotting (WB)

## Product Details

Immunogen:	Synthetic peptide located between aa72-121 of human Nkx2-5 (P52952, NP_004378). Percent identity by BLAST analysis: Human, Chimpanzee, Gibbon, Marmoset, Rat (100%), Mouse, Pig (92%).  Type of Immunogen: Synthetic peptide
Specificity:	Human NKX2-5
Predicted Reactivity:	Percent identity by BLAST analysis: Human (100%) Mouse, Rat (92%) Guinea pig (91%) Dog, Bovine (84%).
Purification:	Immunoaffinity purified

## Target Details

---

Target:	NK2 Homeobox 5 (NKX2-5)
Alternative Name:	NKX2-5 ( <a href="#">NKX2-5 Products</a> )
Background:	Name/Gene ID: NKX2-5  Synonyms: NKX2-5, Cardiac-specific homeo box, Cardiac-specific homeobox 1, Cardiac-specific homeobox, CSX1, CHNG5, HLHS2, NKX2E, NKX4-1, NKX2.5, Tinman paralog, VSD3, CSX, Homeobox protein CSX, Homeobox protein Nkx-2.5, NK2 homeobox 5
Gene ID:	1482
NCBI Accession:	<a href="#">NP_004378</a>
UniProt:	<a href="#">P52952</a>
Pathways:	<a href="#">Regulation of Muscle Cell Differentiation, Skeletal Muscle Fiber Development</a>

## Application Details

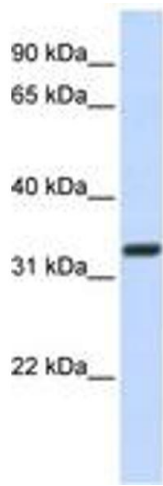
---

Application Notes:	Approved: WB (0.2 - 1 µg/mL)  Usage: Western Blot: Suggested dilution at 1 µg/mL in 5 % skim milk / PBS buffer, and HRP conjugated anti-Rabbit IgG should be diluted in 1: 50,000 - 100,000 as secondary antibody.
Comment:	Target Species of Antibody: Human
Restrictions:	For Research Use only

## Handling

---

Format:	Lyophilized
Reconstitution:	Distilled water
Concentration:	Lot specific
Buffer:	Lyophilized from PBS with 2 % sucrose
Handling Advice:	Avoid repeat freeze-thaw cycles.
Storage:	4 °C, -20 °C
Storage Comment:	Long term: -20°C, the use of 50% glycerol is recommended if storing aliquots in -20°C for long term use (up to 1 year)  Short term (less than 1 week): 4°C. Avoid freeze-thaw cycles.



**Image 1.**