

Datasheet for ABIN6742233
anti-ZC3H7A antibody (AA 360-409)[Go to Product page](#)

1 Image

Overview

Quantity:	100 µL
Target:	ZC3H7A
Binding Specificity:	AA 360-409
Reactivity:	Human, Rat, Horse, Monkey
Host:	Rabbit
Clonality:	Polyclonal
Conjugate:	This ZC3H7A antibody is un-conjugated
Application:	Western Blotting (WB)

Product Details

Immunogen:	Synthetic peptide located between aa360-409 of human ZC3H7A (Q8IWR0, NP_054872). Percent identity by BLAST analysis: Human, Chimpanzee, Gorilla, Gibbon, Monkey, Marmoset, Elephant (100%), Galago, Mouse, Bovine, Bat, Rabbit, Guinea pig (92%), Horse (85%), Rat (78%). Type of Immunogen: Synthetic peptide
Specificity:	Human ZC3H7A
Predicted Reactivity:	Percent identity by BLAST analysis: Human (100%) Mouse, Bovine, Rabbit, Guinea pig (92%) Horse (85%).
Purification:	Immunoaffinity purified

Target Details

Target:	ZC3H7A
Alternative Name:	ZC3H7A (ZC3H7A Products)
Background:	Name/Gene ID: ZC3H7A Synonyms: ZC3H7A, HSPC055, Zinc-finger protein AY163807, ZC3H7, ZC3HDC7
Gene ID:	29066
NCBI Accession:	NP_054872
UniProt:	Q8IWR0
Pathways:	SARS-CoV-2 Protein Interactome

Application Details

Application Notes:	Approved: WB (0.2 - 1 µg/mL) Usage: Western Blot: Suggested dilution at 1 µg/mL in 5 % skim milk / PBS buffer, and HRP conjugated anti-Rabbit IgG should be diluted in 1: 50,000 - 100,000 as secondary antibody.
Comment:	Target Species of Antibody: Human
Restrictions:	For Research Use only

Handling

Format:	Lyophilized
Reconstitution:	Distilled water
Concentration:	Lot specific
Buffer:	Lyophilized from PBS with 2 % sucrose
Handling Advice:	Avoid repeat freeze-thaw cycles.
Storage:	4 °C, -20 °C
Storage Comment:	Long term: -20°C, the use of 50% glycerol is recommended if storing aliquots in -20°C for long term use (up to 1 year) Short term (less than 1 week): 4°C. Avoid freeze-thaw cycles.

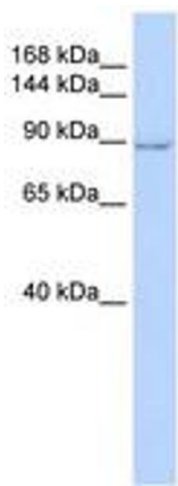


Image 1.