

Datasheet for ABIN6742235
anti-GTF2H4 antibody (AA 72-121)[Go to Product page](#)

1 Image

Overview

Quantity:	100 µL
Target:	GTF2H4
Binding Specificity:	AA 72-121
Reactivity:	Human, Mouse, Rat, Guinea Pig, Dog, Cow, Goat, Pig, Monkey, Horse, Bat
Host:	Rabbit
Clonality:	Polyclonal
Conjugate:	This GTF2H4 antibody is un-conjugated
Application:	Western Blotting (WB)

Product Details

Immunogen:	Synthetic peptide located between aa72-121 of human GTF2H4 (Q92759, NP_001508). Percent identity by BLAST analysis: Human, Chimpanzee, Gorilla, Gibbon, Monkey, Galago, Marmoset, Mouse, Rat, Goat, Elephant, Dog, Bovine, Bat, Horse, Pig, Opossum, Guinea pig (100%), Rabbit, Platypus (92%). Type of Immunogen: Synthetic peptide
Specificity:	Human GTF2H4
Predicted Reactivity:	Percent identity by BLAST analysis: Human, Mouse, Rat, Bovine, Goat, Pig, Guinea pig (100%).
Purification:	Immunoaffinity purified

Target Details

Target:	GTF2H4
Alternative Name:	GTF2H4 / TFB2 (GTF2H4 Products)
Background:	Name/Gene ID: GTF2H4 Synonyms: GTF2H4, BTF2 p52, p52, TFIIH, TFB2
Gene ID:	2968
NCBI Accession:	NP_001508
UniProt:	Q92759
Pathways:	DNA Damage Repair

Application Details

Application Notes:	Approved: WB (0.2 - 1 µg/mL) Usage: Western Blot: Suggested dilution at 1 µg/mL in 5 % skim milk / PBS buffer, and HRP conjugated anti-Rabbit IgG should be diluted in 1: 50,000 - 100,000 as secondary antibody.
Comment:	Target Species of Antibody: Human
Restrictions:	For Research Use only

Handling

Format:	Lyophilized
Reconstitution:	Distilled water
Concentration:	Lot specific
Buffer:	Lyophilized from PBS with 2 % sucrose
Handling Advice:	Avoid repeat freeze-thaw cycles.
Storage:	4 °C, -20 °C
Storage Comment:	Long term: -20°C, the use of 50% glycerol is recommended if storing aliquots in -20°C for long term use (up to 1 year) Short term (less than 1 week): 4°C. Avoid freeze-thaw cycles.

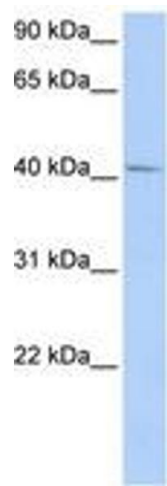


Image 1.