

Datasheet for ABIN6742253 anti-WNT2 antibody (AA 143-192)



[Go to Product page](#)

1 Image

Overview

Quantity:	100 µL
Target:	WNT2
Binding Specificity:	AA 143-192
Reactivity:	Human, Mouse, Rat, Dog, Guinea Pig, Horse, Rabbit, Sheep, Cow, Zebrafish (Danio rerio), Monkey, Pig, Bat
Host:	Rabbit
Clonality:	Polyclonal
Conjugate:	This WNT2 antibody is un-conjugated
Application:	Western Blotting (WB)

Product Details

Immunogen:	Synthetic peptide located between aa143-192 of human WNT2 (P09544, NP_003382). Percent identity by BLAST analysis: Human, Chimpanzee, Gorilla, Orangutan, Gibbon, Baboon, Monkey, Galago, Marmoset, Mouse, Rat, Ferret, Sheep, Dog, Cat, Bovine, Bat, Rabbit, Horse, Pig, Opossum, Guinea pig, Zebra finch, Platypus (100%), Elephant, Turkey, Chicken, Armadillo, Newt (93%), Medaka, Zebrafish (86%), Lizard, Seabass (80%). Type of Immunogen: Synthetic peptide
Specificity:	Human WNT2
Predicted Reactivity:	Percent identity by BLAST analysis: Human, Mouse, Rat, Sheep, Dog, Bovine, Rabbit, Horse, Pig (100%) Chicken (93%) Zebrafish (86%).

Product Details

Purification: Immunoaffinity purified

Target Details

Target: WNT2

Alternative Name: WNT2 / IRP ([WNT2 Products](#))

Background: Name/Gene ID: WNT2
Family: WNT

Synonyms: WNT2, IRP, Int-1-like protein 1, Int-1-related protein, Protein Wnt-2, Secreted growth factor, INT1L1

Gene ID: 7472

NCBI Accession: [NP_003382](#)

UniProt: [P09544](#)

Pathways: [WNT Signaling](#)

Application Details

Application Notes: Approved: WB (0.2 - 1 µg/mL)

Usage: Western Blot: Suggested dilution at 1 µg/mL in 5 % skim milk / PBS buffer, and HRP conjugated anti-Rabbit IgG should be diluted in 1: 50,000 - 100,000 as secondary antibody.

Comment: Target Species of Antibody: Human

Restrictions: For Research Use only

Handling

Format: Lyophilized

Reconstitution: Distilled water

Concentration: Lot specific

Buffer: Lyophilized from PBS with 2 % sucrose

Handling Advice: Avoid repeat freeze-thaw cycles.

Storage: 4 °C, -20 °C

Handling

Storage Comment: Long term: -20°C, the use of 50% glycerol is recommended if storing aliquots in -20°C for long term use (up to 1 year)

Short term (less than 1 week): 4°C. Avoid freeze-thaw cycles.

Images

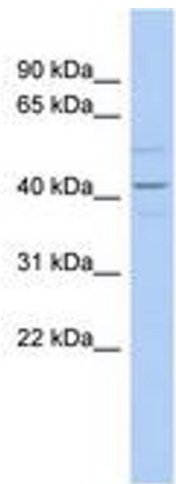


Image 1.