

Datasheet for ABIN6742254
anti-WNT4 antibody (AA 143-192)



[Go to Product page](#)

1 Image

Overview

Quantity:	100 µL
Target:	WNT4
Binding Specificity:	AA 143-192
Reactivity:	Human, Mouse, Rat, Cow, Horse, Monkey, Pig, Dog, Zebrafish (Danio rerio), Guinea Pig, Rabbit, Chicken
Host:	Rabbit
Clonality:	Polyclonal
Conjugate:	This WNT4 antibody is un-conjugated
Application:	Western Blotting (WB)

Product Details

Immunogen:	Synthetic peptide located between aa143-192 of human WNT4 (P56705, NP_110388). Percent identity by BLAST analysis: Human, Chimpanzee, Gorilla, Gibbon, Monkey, Galago, Marmoset, Mouse, Rat, Panda, Dog, Bovine, Rabbit, Horse, Pig, Opossum, Guinea pig, Chicken, Platypus (100%), Zebra finch, Xenopus, Trout, Seabass, Stickleback (92%), Zebrafish (85%), Medaka (81%). Type of Immunogen: Synthetic peptide
Specificity:	Human WNT4
Predicted Reactivity:	Percent identity by BLAST analysis: Human, Mouse, Rat, Dog, Bovine, Horse, Pig, Guinea pig, Chicken (100%) Xenopus (92%) Zebrafish (85%).

Product Details

Purification: Immunoaffinity purified

Target Details

Target:	WNT4
Alternative Name:	WNT4 (WNT4 Products)
Background:	Name/Gene ID: WNT4 Family: WNT Synonyms: WNT4, WNT-4, Protein Wnt-4, SERKAL
Gene ID:	54361
NCBI Accession:	NP_110388
UniProt:	P56705
Pathways:	WNT Signaling , Regulation of Hormone Metabolic Process , Regulation of Hormone Biosynthetic Process , Cell-Cell Junction Organization , Tube Formation

Application Details

Application Notes:	Approved: WB (0.2 - 1 µg/mL) Usage: Western Blot: Suggested dilution at 1 µg/mL in 5 % skim milk / PBS buffer, and HRP conjugated anti-Rabbit IgG should be diluted in 1: 50,000 - 100,000 as secondary antibody.
Comment:	Target Species of Antibody: Human
Restrictions:	For Research Use only

Handling

Format:	Lyophilized
Reconstitution:	Distilled water
Concentration:	Lot specific
Buffer:	Lyophilized from PBS with 2 % sucrose
Handling Advice:	Avoid repeat freeze-thaw cycles.
Storage:	4 °C,-20 °C

Handling

Storage Comment: Long term: -20°C, the use of 50% glycerol is recommended if storing aliquots in -20°C for long term use (up to 1 year)

Short term (less than 1 week): 4°C. Avoid freeze-thaw cycles.

Images

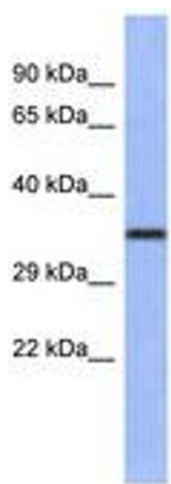


Image 1.