



[Go to Product page](#)

Datasheet for ABIN6742271
anti-PITX2 antibody (N-Term)

1 Image

Overview

Quantity:	100 µL
Target:	PITX2
Binding Specificity:	N-Term
Reactivity:	Human, Rat, Horse, Dog, Monkey
Host:	Rabbit
Clonality:	Polyclonal
Conjugate:	This PITX2 antibody is un-conjugated
Application:	Western Blotting (WB)

Product Details

Immunogen:	Synthetic peptide from N-Terminus of human PITX2 (Q99697, NP_700475). Percent identity by BLAST analysis: Human, Chimpanzee, Gorilla, Monkey, Galago, Marmoset, Rat, Dog, Horse (100%), Mouse (92%), Guinea pig (91%). Type of Immunogen: Synthetic peptide
Specificity:	Human PITX2
Predicted Reactivity:	Percent identity by BLAST analysis: Human, Rat, Dog, Horse (100%) Mouse (92%) Guinea pig (91%).
Purification:	Immunoaffinity purified

Target Details

Target:	PITX2
Alternative Name:	PITX2 / RGS (PITX2 Products)
Background:	Name/Gene ID: PITX2 Synonyms: PITX2, All1-responsive gene 1, ARP1, Brx1, Homeobox protein PITX2, IGDS2, IRID2, Iridogoniodysgenesis type 2, IGDS, Pituitary homeobox 2, PTX2, ALL1-responsive protein ARP1, RGS, Soturshin, Otlx2, Paired-like homeodomain 2, RIEG, RIEG1, RS, IDG2, IHG2
Gene ID:	5308
NCBI Accession:	NP_700475
UniProt:	Q99697
Pathways:	Retinoic Acid Receptor Signaling Pathway , Regulation of Muscle Cell Differentiation , Skeletal Muscle Fiber Development

Application Details

Application Notes:	Approved: WB (0.2 - 1 µg/mL) Usage: Western Blot: Suggested dilution at 1 µg/mL in 5 % skim milk / PBS buffer, and HRP conjugated anti-Rabbit IgG should be diluted in 1: 50,000 - 100,000 as secondary antibody. Not recommended for: IHC-P
Comment:	Target Species of Antibody: Human
Restrictions:	For Research Use only

Handling

Format:	Lyophilized
Reconstitution:	Distilled water
Concentration:	Lot specific
Buffer:	Lyophilized from PBS with 2 % sucrose
Handling Advice:	Avoid repeat freeze-thaw cycles.
Storage:	4 °C, -20 °C

Handling

Storage Comment: Long term: -20°C, the use of 50% glycerol is recommended if storing aliquots in -20°C for long term use (up to 1 year)
Short term (less than 1 week): 4°C. Avoid freeze-thaw cycles.

Images

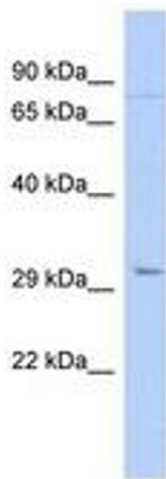


Image 1.