

Datasheet for ABIN6742325
anti-KLF12 antibody (AA 51-100)[Go to Product page](#)

1 Image

Overview

Quantity:	100 µL
Target:	KLF12
Binding Specificity:	AA 51-100
Reactivity:	Human, Mouse, Rat, Dog, Guinea Pig, Rabbit, Cow, Horse, Pig, Monkey, Bat, Xenopus laevis
Host:	Rabbit
Clonality:	Polyclonal
Conjugate:	This KLF12 antibody is un-conjugated
Application:	Western Blotting (WB)

Product Details

Immunogen:	Synthetic peptide located between aa51-100 of human KLF12 (Q9Y4X4-2). Percent identity by BLAST analysis: Human, Chimpanzee, Gorilla, Gibbon, Monkey, Galago, Marmoset, Mouse, Rat, Elephant, Dog, Bovine, Bat, Rabbit, Horse, Pig, Opossum, Guinea pig, Platypus, Xenopus (100%), Turkey, Chicken, Zebrafish (92%), Stickleback (85%). Type of Immunogen: Synthetic peptide
Specificity:	Human KLF12
Predicted Reactivity:	Percent identity by BLAST analysis: Human, Mouse, Rat, Dog, Bovine, Rabbit, Horse, Pig, Guinea pig (100%) Chicken, Zebrafish (92%).
Purification:	Immunoaffinity purified

Target Details

Target:	KLF12
Alternative Name:	KLF12 (KLF12 Products)
Background:	Name/Gene ID: KLF12 Synonyms: KLF12, AP-2rep transcription factor, AP-2 repressor, AP-2rep, HSPC122, Krueppel-like factor 12, Kruppel-like factor 12, AP2REP
Gene ID:	11278
UniProt:	Q9Y4X4

Application Details

Application Notes:	Approved: WB (0.2 - 1 µg/mL) Usage: Western Blot: Suggested dilution at 1 µg/mL in 5 % skim milk / PBS buffer, and HRP conjugated anti-Rabbit IgG should be diluted in 1: 50,000 - 100,000 as secondary antibody.
Comment:	Target Species of Antibody: Human
Restrictions:	For Research Use only

Handling

Format:	Lyophilized
Reconstitution:	Distilled water
Concentration:	Lot specific
Buffer:	Lyophilized from PBS with 2 % sucrose
Handling Advice:	Avoid repeat freeze-thaw cycles.
Storage:	4 °C, -20 °C
Storage Comment:	Long term: -20°C, the use of 50% glycerol is recommended if storing aliquots in -20°C for long term use (up to 1 year) Short term (less than 1 week): 4°C. Avoid freeze-thaw cycles.

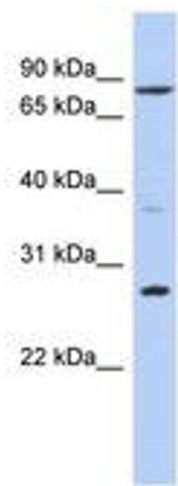


Image 1.