

Datasheet for ABIN6742337
anti-POU3F3 antibody (AA 35-84)



[Go to Product page](#)

1 Image

Overview

Quantity:	100 µL
Target:	POU3F3
Binding Specificity:	AA 35-84
Reactivity:	Human, Mouse, Rat
Host:	Rabbit
Clonality:	Polyclonal
Conjugate:	This POU3F3 antibody is un-conjugated
Application:	Western Blotting (WB)

Product Details

Immunogen:	Synthetic peptide located between aa35-84 of human POU3F3 (P20264, NP_006227). Percent identity by BLAST analysis: Human, Mouse, Rat, Opossum (100%). Type of Immunogen: Synthetic peptide
Specificity:	Human POU3F3
Predicted Reactivity:	Percent identity by BLAST analysis: Human, Mouse, Rat (100%).
Purification:	Immunoaffinity purified

Target Details

Target:	POU3F3
Alternative Name:	POU3F3 / BRN1 (POU3F3 Products)

Target Details

Background: Name/Gene ID: POU3F3
Synonyms: POU3F3, Brain-1, BRN1, OTF8, OTF-8, POU class 3 homeobox 3, Brn-1, Oct-8, Octamer-binding protein 8

Gene ID: 5455

NCBI Accession: [NP_006227](#)

UniProt: [P20264](#)

Application Details

Application Notes: Approved: WB (0.2 - 1 µg/mL)
Usage: Western Blot: Suggested dilution at 1 µg/mL in 5 % skim milk / PBS buffer, and HRP conjugated anti-Rabbit IgG should be diluted in 1: 50,000 - 100,000 as secondary antibody.

Comment: Target Species of Antibody: Human

Restrictions: For Research Use only

Handling

Format: Lyophilized

Reconstitution: Distilled water

Concentration: Lot specific

Buffer: Lyophilized from PBS with 2 % sucrose

Handling Advice: Avoid repeat freeze-thaw cycles.

Storage: 4 °C, -20 °C

Storage Comment: Long term: -20°C, the use of 50% glycerol is recommended if storing aliquots in -20°C for long term use (up to 1 year)
Short term (less than 1 week): 4°C. Avoid freeze-thaw cycles.

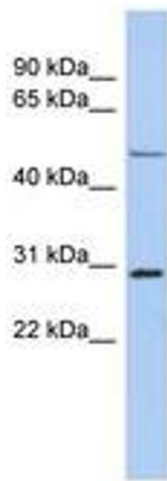


Image 1.