



[Go to Product page](#)

Datasheet for ABIN6742349  
**anti-ZNF410 antibody (AA 35-84)**

1 Image

Overview

Quantity:	100 µL
Target:	ZNF410
Binding Specificity:	AA 35-84
Reactivity:	Human, Mouse, Rat, Cow, Horse, Rabbit, Dog, Hamster
Host:	Rabbit
Clonality:	Polyclonal
Conjugate:	This ZNF410 antibody is un-conjugated
Application:	Western Blotting (WB)

Product Details

Immunogen:	Synthetic peptide located between aa35-84 of human ZNF410 (Q86VK4, NP_067011). Percent identity by BLAST analysis: Human, Chimpanzee, Gorilla, Orangutan, Gibbon, Galago, Marmoset, Mouse, Rat, Hamster, Dog, Bovine, Rabbit, Horse (100%), Monkey (92%), Elephant, Bat, Guinea pig (91%).  Type of Immunogen: Synthetic peptide
Specificity:	Human ZNF410
Predicted Reactivity:	Percent identity by BLAST analysis: Human, Dog, Bovine, Rabbit, Horse (100%).
Purification:	Immunoaffinity purified

## Target Details

---

Target:	ZNF410
Alternative Name:	ZNF410 ( <a href="#">ZNF410 Products</a> )
Background:	Name/Gene ID: ZNF410 Family: Zinc Finger  Synonyms: ZNF410, Another partner for ARF 1, APA-1, APA1, Zinc finger protein 410, Zinc finger protein APA-1
Gene ID:	57862
NCBI Accession:	<a href="#">NP_067011</a>
UniProt:	<a href="#">Q86VK4</a>

## Application Details

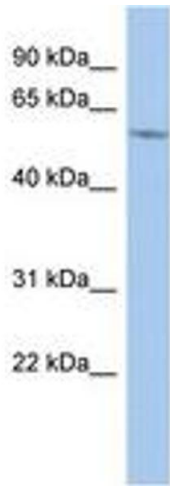
---

Application Notes:	Approved: WB (0.2 - 1 µg/mL)  Usage: Western Blot: Suggested dilution at 1 µg/mL in 5 % skim milk / PBS buffer, and HRP conjugated anti-Rabbit IgG should be diluted in 1: 50,000 - 100,000 as secondary antibody.
Comment:	Target Species of Antibody: Human
Restrictions:	For Research Use only

## Handling

---

Format:	Lyophilized
Reconstitution:	Distilled water
Concentration:	Lot specific
Buffer:	Lyophilized from PBS with 2 % sucrose
Handling Advice:	Avoid repeat freeze-thaw cycles.
Storage:	4 °C, -20 °C
Storage Comment:	Long term: -20°C, the use of 50% glycerol is recommended if storing aliquots in -20°C for long term use (up to 1 year) Short term (less than 1 week): 4°C. Avoid freeze-thaw cycles.



**Image 1.**