

Datasheet for ABIN6742350
anti-NKX3-2 antibody (AA 251-300)[Go to Product page](#)

1 Image

Overview

Quantity:	100 µL
Target:	NKX3-2
Binding Specificity:	AA 251-300
Reactivity:	Human, Mouse, Rat, Dog, Cow, Rabbit, Guinea Pig, Monkey, Pig, Xenopus laevis
Host:	Rabbit
Clonality:	Polyclonal
Conjugate:	This NKX3-2 antibody is un-conjugated
Application:	Western Blotting (WB)

Product Details

Immunogen:	Synthetic peptide located between aa251-300 of human NKX3-2 (P78367, NP_001180). Percent identity by BLAST analysis: Human, Chimpanzee, Marmoset, Mouse, Rat, Bovine, Rabbit, Pig, Guinea pig, Xenopus (100%). Type of Immunogen: Synthetic peptide
Specificity:	Human NKX3-2 / BAPX1
Predicted Reactivity:	Percent identity by BLAST analysis: Dog, Bovine, Rabbit, Chicken (100%).
Purification:	Immunoaffinity purified

Target Details

Target:	NKX3-2
---------	--------

Target Details

Alternative Name:	NKX3-2 / BAPX1 (NKX3-2 Products)
Background:	Name/Gene ID: NKX3-2 Synonyms: NKX3-2, NK3 homeobox 2, NKX3.2, Homeobox protein Nkx-3.2, BAPX1, NKX3B, SMMD
Gene ID:	579
NCBI Accession:	NP_001180
UniProt:	P78367

Application Details

Application Notes:	Approved: WB (0.2 - 1 µg/mL) Usage: Western Blot: Suggested dilution at 1 µg/mL in 5 % skim milk / PBS buffer, and HRP conjugated anti-Rabbit IgG should be diluted in 1: 50,000 - 100,000 as secondary antibody.
Comment:	Target Species of Antibody: Human
Restrictions:	For Research Use only

Handling

Format:	Lyophilized
Reconstitution:	Distilled water
Concentration:	Lot specific
Buffer:	Lyophilized from PBS with 2 % sucrose
Handling Advice:	Avoid repeat freeze-thaw cycles.
Storage:	4 °C, -20 °C
Storage Comment:	Long term: -20°C, the use of 50% glycerol is recommended if storing aliquots in -20°C for long term use (up to 1 year) Short term (less than 1 week): 4°C. Avoid freeze-thaw cycles.

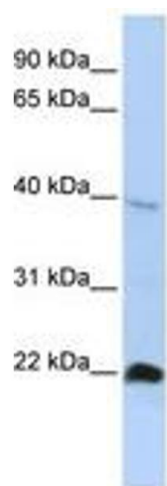


Image 1.