



## Datasheet for ABIN6742355 anti-DPF2 antibody (AA 179-228)



[Go to Product page](#)

### 1 Image

#### Overview

Quantity:	100 µL
Target:	DPF2
Binding Specificity:	AA 179-228
Reactivity:	Human, Mouse, Rat, Dog, Horse, Guinea Pig, Zebrafish (Danio rerio), Pig
Host:	Rabbit
Clonality:	Polyclonal
Conjugate:	This DPF2 antibody is un-conjugated
Application:	Western Blotting (WB)

#### Product Details

Immunogen:	Synthetic peptide located between aa179-228 of human DPF2 (Q92785, NP_006259). Percent identity by BLAST analysis: Human, Chimpanzee, Gorilla, Orangutan, Gibbon, Monkey, Panda, Dog, Horse, Pig, Guinea pig (100%), Galago, Marmoset, Goat, Bovine, Bat, Rabbit, Platypus (92%), Mouse, Rat, Hamster, Elephant, Opossum, Zebra finch, Chicken, Xenopus (85%).  Type of Immunogen: Synthetic peptide
Specificity:	Human DPF2
Predicted Reactivity:	Percent identity by BLAST analysis: Dog, Horse, Pig (100%) Bovine, Goat, Rabbit (92%) Mouse, Rat (85%).
Purification:	Immunoaffinity purified

## Target Details

---

Target:	DPF2
Alternative Name:	Requiem / DPF2 ( <a href="#">DPF2 Products</a> )
Background:	Name/Gene ID: DPF2  Synonyms: DPF2, BAF45D, REQ, UBID4, Zinc finger protein ubi-d4, BRG1-associated factor 45D, Ubi-d4, Protein requiem, Requiem
Gene ID:	5977
NCBI Accession:	<a href="#">NP_006259</a>
UniProt:	<a href="#">Q92785</a>

## Application Details

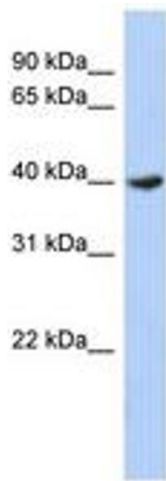
---

Application Notes:	Approved: WB (0.2 - 1 µg/mL)  Usage: Western Blot: Suggested dilution at 1 µg/mL in 5 % skim milk / PBS buffer, and HRP conjugated anti-Rabbit IgG should be diluted in 1: 50,000 - 100,000 as secondary antibody.
Comment:	Target Species of Antibody: Human
Restrictions:	For Research Use only

## Handling

---

Format:	Lyophilized
Reconstitution:	Distilled water
Concentration:	Lot specific
Buffer:	Lyophilized from PBS with 2 % sucrose
Handling Advice:	Avoid repeat freeze-thaw cycles.
Storage:	4 °C, -20 °C
Storage Comment:	Long term: -20°C, the use of 50% glycerol is recommended if storing aliquots in -20°C for long term use (up to 1 year)  Short term (less than 1 week): 4°C. Avoid freeze-thaw cycles.



**Image 1.**