

Datasheet for ABIN6742364
anti-SHOX2 antibody (N-Term)[Go to Product page](#)

1 Image

Overview

Quantity:	100 µL
Target:	SHOX2
Binding Specificity:	N-Term
Reactivity:	Human, Rat, Mouse, Cow, Dog, Guinea Pig, Monkey
Host:	Rabbit
Clonality:	Polyclonal
Conjugate:	This SHOX2 antibody is un-conjugated
Application:	Western Blotting (WB)

Product Details

Immunogen:	Synthetic peptide from N-Terminus of human SHOX2 (O60902, NP_006875). Percent identity by BLAST analysis: Human, Chimpanzee, Gorilla, Monkey, Marmoset, Mouse, Rat, Dog, Bovine, Guinea pig (100%), Platypus, Zebrafish (92%), Xenopus (85%). Type of Immunogen: Synthetic peptide
Specificity:	Human SHOX2
Predicted Reactivity:	Percent identity by BLAST analysis: Human, Mouse, Rat, Dog, Bovine (100%) Zebrafish (92%).
Purification:	Immunoaffinity purified

Target Details

Target:	SHOX2
---------	-------

Target Details

Alternative Name:	SHOX2 (SHOX2 Products)
Background:	Name/Gene ID: SHOX2 Synonyms: SHOX2, Homeobox protein shotb, OG12X, OG12, Short stature homeobox 2, Homeobox protein Og12X, SHOT
Gene ID:	6474
NCBI Accession:	NP_006875
UniProt:	O60902
Pathways:	Regulation of Muscle Cell Differentiation , Skeletal Muscle Fiber Development

Application Details

Application Notes:	Approved: WB (0.2 - 1 µg/mL) Usage: Western Blot: Suggested dilution at 1 µg/mL in 5 % skim milk / PBS buffer, and HRP conjugated anti-Rabbit IgG should be diluted in 1: 50,000 - 100,000 as secondary antibody.
Comment:	Target Species of Antibody: Human
Restrictions:	For Research Use only

Handling

Format:	Lyophilized
Reconstitution:	Distilled water
Concentration:	Lot specific
Buffer:	Lyophilized from PBS with 2 % sucrose
Handling Advice:	Avoid repeat freeze-thaw cycles.
Storage:	4 °C, -20 °C
Storage Comment:	Long term: -20°C, the use of 50% glycerol is recommended if storing aliquots in -20°C for long term use (up to 1 year) Short term (less than 1 week): 4°C. Avoid freeze-thaw cycles.

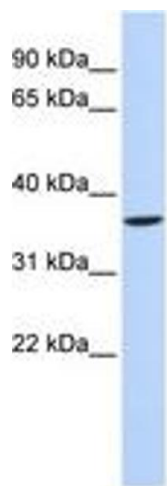


Image 1.