



[Go to Product page](#)

Datasheet for ABIN6742369  
**anti-Sp2 antibody (AA 28-77)**

1 Image

Overview

Quantity:	100 µL
Target:	Sp2
Binding Specificity:	AA 28-77
Reactivity:	Human, Mouse, Rat, Pig, Cow, Horse, Rabbit, Monkey, Bat, Drosophila melanogaster, Chicken
Host:	Rabbit
Clonality:	Polyclonal
Conjugate:	This Sp2 antibody is un-conjugated
Application:	Western Blotting (WB)

Product Details

Immunogen:	Synthetic peptide located between aa28-77 of human SP2 (Q02086). Percent identity by BLAST analysis: Human, Chimpanzee, Gorilla, Gibbon, Monkey, Galago, Marmoset, Mouse, Rat, Elephant, Bovine, Bat, Rabbit, Horse, Pig, Opossum, Turkey, Chicken, Drosophila (100%), Lizard (91%).  Type of Immunogen: Synthetic peptide
Specificity:	Human SP2
Predicted Reactivity:	Percent identity by BLAST analysis: Human, Mouse, Rat, Bovine, Rabbit, Horse, Pig (100%).
Purification:	Immunoaffinity purified

## Target Details

---

Target: Sp2

Alternative Name: SP2 ([Sp2 Products](#))

Background: Name/Gene ID: SP2

Synonyms: SP2, KIAA0048, Sp2 transcription factor, Transcription factor Sp2

Gene ID: 6668

UniProt: [Q02086](#)

## Application Details

---

Application Notes: Approved: WB (0.2 - 1 µg/mL)

Usage: Western Blot: Suggested dilution at 1 µg/mL in 5 % skim milk / PBS buffer, and HRP conjugated anti-Rabbit IgG should be diluted in 1: 50,000 - 100,000 as secondary antibody.

Not recommended for: IHC-P

Comment: Target Species of Antibody: Human

Restrictions: For Research Use only

## Handling

---

Format: Lyophilized

Reconstitution: Distilled water

Concentration: Lot specific

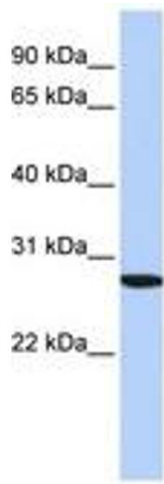
Buffer: Lyophilized from PBS with 2 % sucrose

Handling Advice: Avoid repeat freeze-thaw cycles.

Storage: 4 °C, -20 °C

Storage Comment: Long term: -20°C, the use of 50% glycerol is recommended if storing aliquots in -20°C for long term use (up to 1 year)

Short term (less than 1 week): 4°C. Avoid freeze-thaw cycles.



**Image 1.**