



[Go to Product page](#)

Datasheet for ABIN6742376
anti-TCF19 antibody (AA 71-120)

1 Image

Overview

Quantity:	100 µL
Target:	TCF19
Binding Specificity:	AA 71-120
Reactivity:	Human, Rat, Mouse, Dog, Horse, Pig, Rabbit
Host:	Rabbit
Clonality:	Polyclonal
Conjugate:	This TCF19 antibody is un-conjugated
Application:	Western Blotting (WB)

Product Details

Immunogen:	Synthetic peptide located between aa71-120 of human TCF19 (Q9Y242, NP_009040). Percent identity by BLAST analysis: Human, Chimpanzee, Gorilla, Gibbon, Galago, Marmoset, Mouse, Rat, Elephant, Panda, Dog, Horse, Pig (100%), Monkey, Bovine, Bat (92%), Rabbit (81%). Type of Immunogen: Synthetic peptide
Specificity:	Human TCF19
Predicted Reactivity:	Percent identity by BLAST analysis: Human, Mouse, Rat, Dog, Pig (100%) Bovine (92%) Rabbit (81%).
Purification:	Immunoaffinity purified

Target Details

Target:	TCF19
Alternative Name:	TCF19 / TCF-19 (TCF19 Products)
Background:	Name/Gene ID: TCF19 Family: Transcription factor Synonyms: TCF19, SC1(TCF19)-7, SC1, TCF-19, Transcription factor 19, Transcription factor SC1, SCI(TCF19)-4, SC1(TCF19)-6, SC1-1
Gene ID:	6941
NCBI Accession:	NP_009040
UniProt:	Q9Y242

Application Details

Application Notes:	Approved: WB (0.2 - 1 µg/mL) Usage: Western Blot: Suggested dilution at 1 µg/mL in 5 % skim milk / PBS buffer, and HRP conjugated anti-Rabbit IgG should be diluted in 1: 50,000 - 100,000 as secondary antibody.
Comment:	Target Species of Antibody: Human
Restrictions:	For Research Use only

Handling

Format:	Lyophilized
Reconstitution:	Distilled water
Concentration:	Lot specific
Buffer:	Lyophilized from PBS with 2 % sucrose
Handling Advice:	Avoid repeat freeze-thaw cycles.
Storage:	4 °C,-20 °C
Storage Comment:	Long term: -20°C, the use of 50% glycerol is recommended if storing aliquots in -20°C for long term use (up to 1 year) Short term (less than 1 week): 4°C. Avoid freeze-thaw cycles.

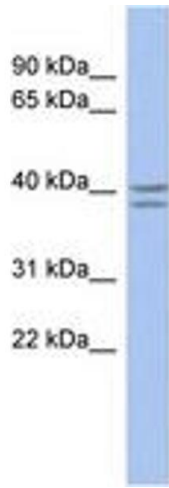


Image 1.