



Datasheet for ABIN6742388
anti-ZNF711 antibody (AA 215-264)



[Go to Product page](#)

1 Image

Overview

Quantity:	100 µL
Target:	ZNF711
Binding Specificity:	AA 215-264
Reactivity:	Human, Dog, Xenopus laevis
Host:	Rabbit
Clonality:	Polyclonal
Conjugate:	This ZNF711 antibody is un-conjugated
Application:	Western Blotting (WB)

Product Details

Immunogen:	Synthetic peptide located between aa215-264 of human ZNF711 (Q9Y462, NP_068838). Percent identity by BLAST analysis: Human, Chimpanzee, Gibbon, Platypus, Xenopus (100%), Monkey, Galago, Marmoset, Rat, Bovine, Bat, Rabbit, Horse, Pig, Guinea pig, Turkey, Zebra finch, Chicken (92%), Mouse, Elephant, Dog (85%). Type of Immunogen: Synthetic peptide
Specificity:	Human ZNF711
Predicted Reactivity:	Percent identity by BLAST analysis: Human (100%) Bovine, Rabbit, Horse, Pig, Guinea pig, Chicken (92%) Dog (85%).
Purification:	Immunoaffinity purified

Target Details

Target:	ZNF711
Alternative Name:	ZNF711 (ZNF711 Products)
Background:	Name/Gene ID: ZNF711 Synonyms: ZNF711, CMPX1, DJ75N13.1 (znf6-like), MRX97, Zinc finger protein 6 (CMPX1), ZNF4, Zfp711, Zinc finger protein 6, Zinc finger protein 711, ZNF6, DJ75N13.1, ZNF5
Gene ID:	7552
NCBI Accession:	NP_068838
UniProt:	Q9Y462

Application Details

Application Notes:	Approved: WB (0.2 - 1 µg/mL) Usage: Western Blot: Suggested dilution at 1 µg/mL in 5 % skim milk / PBS buffer, and HRP conjugated anti-Rabbit IgG should be diluted in 1: 50,000 - 100,000 as secondary antibody.
Comment:	Target Species of Antibody: Human
Restrictions:	For Research Use only

Handling

Format:	Lyophilized
Reconstitution:	Distilled water
Concentration:	Lot specific
Buffer:	Lyophilized from PBS with 2 % sucrose
Handling Advice:	Avoid repeat freeze-thaw cycles.
Storage:	4 °C, -20 °C
Storage Comment:	Long term: -20°C, the use of 50% glycerol is recommended if storing aliquots in -20°C for long term use (up to 1 year) Short term (less than 1 week): 4°C. Avoid freeze-thaw cycles.

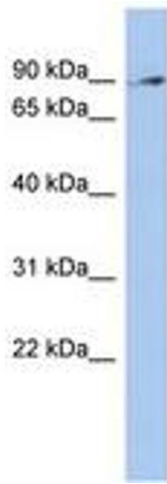


Image 1.