



[Go to Product page](#)

Datasheet for ABIN6742391
anti-ZNF217 antibody (AA 71-120)

1 Image

Overview

Quantity:	100 µL
Target:	ZNF217
Binding Specificity:	AA 71-120
Reactivity:	Human, Rabbit, Dog, Horse, Guinea Pig, Monkey
Host:	Rabbit
Clonality:	Polyclonal
Conjugate:	This ZNF217 antibody is un-conjugated
Application:	Western Blotting (WB)

Product Details

Immunogen:	Synthetic peptide located between aa71-120 of human ZNF217 (O75362, NP_006517). Percent identity by BLAST analysis: Human, Chimpanzee, Gorilla, Gibbon, Monkey, Galago, Marmoset, Dog, Rabbit, Horse, Opossum, Guinea pig (100%), Turkey, Zebra finch, Chicken, Platypus (92%), Elephant, Bovine, Pig (91%), Rat (84%). Type of Immunogen: Synthetic peptide
Specificity:	Human ZNF217
Predicted Reactivity:	Percent identity by BLAST analysis: Human, Dog, Rabbit, Horse, Guinea pig (100%) Chicken (92%) Bovine, Pig (91%).
Purification:	Immunoaffinity purified

Target Details

Target:	ZNF217
Alternative Name:	ZNF217 (ZNF217 Products)
Background:	Name/Gene ID: ZNF217 Family: Zinc Finger Synonyms: ZNF217, Zinc finger protein 217, ZABC1
Gene ID:	7764
NCBI Accession:	NP_006517
UniProt:	O75362

Application Details

Application Notes:	Approved: WB (0.2 - 1 µg/mL) Usage: Western Blot: Suggested dilution at 1 µg/mL in 5 % skim milk / PBS buffer, and HRP conjugated anti-Rabbit IgG should be diluted in 1: 50,000 - 100,000 as secondary antibody.
Comment:	Target Species of Antibody: Human
Restrictions:	For Research Use only

Handling

Format:	Lyophilized
Reconstitution:	Reconstitute with 50 µL sterile ddH ₂ O.
Concentration:	Lot specific
Buffer:	Lyophilized from PBS with 2 % sucrose
Handling Advice:	Avoid repeat freeze-thaw cycles.
Storage:	4 °C, -20 °C
Storage Comment:	Long term: -20°C, the use of 50% glycerol is recommended if storing aliquots in -20°C for long term use (up to 1 year) Short term (less than 1 week): 4°C. Avoid freeze-thaw cycles.

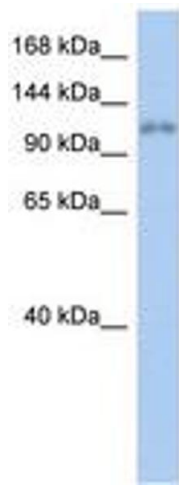


Image 1.