



[Go to Product page](#)

Datasheet for ABIN6742394

anti-HSPBAP1 antibody (AA 180-229)

1 Image

Overview

Quantity:	100 µL
Target:	HSPBAP1
Binding Specificity:	AA 180-229
Reactivity:	Human, Mouse, Rat, Dog, Cow, Guinea Pig, Horse, Rabbit, Pig, Monkey, Bat, Chicken
Host:	Rabbit
Clonality:	Polyclonal
Conjugate:	This HSPBAP1 antibody is un-conjugated
Application:	Western Blotting (WB)

Product Details

Immunogen:	Synthetic peptide located between aa180-229 of human HSPBAP1 (Q96EW2, NP_078886). Percent identity by BLAST analysis: Human, Chimpanzee, Gorilla, Gibbon, Monkey, Marmoset, Mouse, Rat, Elephant, Dog, Bovine, Bat, Rabbit, Horse, Pig, Opossum, Guinea pig, Turkey, Zebra finch, Chicken, Platypus, Stickleback (100%), Galago, Lizard (92%), Zebrafish (91%), Xenopus (85%). Type of Immunogen: Synthetic peptide
Specificity:	Human HSPBAP1
Predicted Reactivity:	Percent identity by BLAST analysis: Human, Rat, Dog, Rabbit, Horse, Pig, Chicken (100%) Xenopus (85%).
Purification:	Immunoaffinity purified

Target Details

Target:	HSPBAP1
Alternative Name:	HSPBAP1 (HSPBAP1 Products)
Background:	Name/Gene ID: HSPBAP1 Synonyms: HSPBAP1, HSPB1-associated protein 1, PASS1
Gene ID:	79663
NCBI Accession:	NP_078886
UniProt:	Q96EW2

Application Details

Application Notes:	Approved: WB (0.2 - 1 µg/mL) Usage: Western Blot: Suggested dilution at 1 µg/mL in 5 % skim milk / PBS buffer, and HRP conjugated anti-Rabbit IgG should be diluted in 1: 50,000 - 100,000 as secondary antibody.
Comment:	Target Species of Antibody: Human
Restrictions:	For Research Use only

Handling

Format:	Lyophilized
Reconstitution:	Distilled water
Concentration:	Lot specific
Buffer:	Lyophilized from PBS with 2 % sucrose
Handling Advice:	Avoid repeat freeze-thaw cycles.
Storage:	4 °C, -20 °C
Storage Comment:	Long term: -20°C, the use of 50% glycerol is recommended if storing aliquots in -20°C for long term use (up to 1 year) Short term (less than 1 week): 4°C. Avoid freeze-thaw cycles.

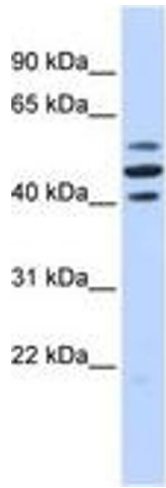


Image 1.