



Datasheet for ABIN6742416
anti-KIF22 antibody (AA 72-121)



[Go to Product page](#)

1 Image

Overview

Quantity:	100 µL
Target:	KIF22
Binding Specificity:	AA 72-121
Reactivity:	Human, Dog, Guinea Pig, Cow, Horse, Monkey
Host:	Rabbit
Clonality:	Polyclonal
Conjugate:	This KIF22 antibody is un-conjugated
Application:	Western Blotting (WB)

Product Details

Immunogen:	Synthetic peptide located between aa72-121 of human KIF22 (Q14807, NP_015556). Percent identity by BLAST analysis: Human, Chimpanzee, Gorilla, Orangutan, Gibbon, Monkey, Galago, Marmoset, Elephant, Dog, Bovine, Horse, Guinea pig, Platypus (100%), Mouse, Rat, Hamster, Opossum (92%), Bat (90%). Type of Immunogen: Synthetic peptide
Specificity:	Human KIF22
Predicted Reactivity:	Percent identity by BLAST analysis: Human, Dog, Bovine, Guinea pig (100%) Mouse, Rat (92%).
Purification:	Immunoaffinity purified

Target Details

Target:	KIF22
Alternative Name:	KIF22 / OBP (KIF22 Products)
Background:	Name/Gene ID: KIF22 Synonyms: KIF22, A-328A3.2, KID, Kinesin family member 22, Kinesin-like protein KIF22, KNSL4, OBP-1, Kinesin-like protein 4, SEMDJL2, OBP, OBP-2, Kinesin-like 4, OriP binding protein
Gene ID:	3835
NCBI Accession:	NP_015556
UniProt:	Q14807

Application Details

Application Notes:	Approved: WB (0.2 - 1 µg/mL) Usage: Western Blot: Suggested dilution at 1 µg/mL in 5 % skim milk / PBS buffer, and HRP conjugated anti-Rabbit IgG should be diluted in 1: 50,000 - 100,000 as secondary antibody.
Comment:	Target Species of Antibody: Human
Restrictions:	For Research Use only

Handling

Format:	Lyophilized
Reconstitution:	Distilled water
Concentration:	Lot specific
Buffer:	Lyophilized from PBS with 2 % sucrose
Handling Advice:	Avoid repeat freeze-thaw cycles.
Storage:	4 °C, -20 °C
Storage Comment:	Long term: -20°C, the use of 50% glycerol is recommended if storing aliquots in -20°C for long term use (up to 1 year) Short term (less than 1 week): 4°C. Avoid freeze-thaw cycles.

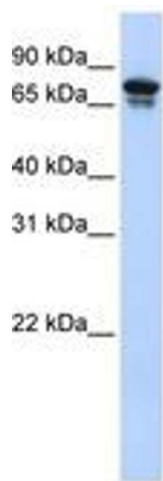


Image 1.