



[Go to Product page](#)

Datasheet for ABIN6742421
anti-PARP12 antibody (C-Term)

1 Image

Overview

Quantity:	100 µL
Target:	PARP12
Binding Specificity:	C-Term
Reactivity:	Human, Mouse, Dog, Pig, Rabbit, Cow
Host:	Rabbit
Clonality:	Polyclonal
Conjugate:	This PARP12 antibody is un-conjugated
Application:	Western Blotting (WB)

Product Details

Immunogen:	Synthetic peptide from C-Terminus of human PARP12 (Q9H0J9, NP_073587). Percent identity by BLAST analysis: Human, Chimpanzee, Gorilla, Pig (100%), Gibbon, Monkey, Bat, Horse (92%), Elephant (91%), Opossum (90%), Galago, Marmoset, Mouse (85%), Bovine (84%), Rabbit (83%). Type of Immunogen: Synthetic peptide
Specificity:	Human PARP12
Predicted Reactivity:	Percent identity by BLAST analysis: Human, Pig (100%) Horse (92%) Mouse (85%) Bovine (84%) Rabbit (83%).
Purification:	Immunoaffinity purified

Target Details

Target: PARP12

Alternative Name: PARP12 ([PARP12 Products](#))

Background: Name/Gene ID: PARP12

Synonyms: PARP12, ARTD12, MSTP109, ZC3H1, ZC3HDC1, MST109, PARP-12

Gene ID: 64761

NCBI Accession: [NP_073587](#)

UniProt: [Q9H0J9](#)

Application Details

Application Notes: Approved: WB (0.2 - 1 µg/mL)

Usage: Western Blot: Suggested dilution at 1 µg/mL in 5 % skim milk / PBS buffer, and HRP conjugated anti-Rabbit IgG should be diluted in 1: 50,000 - 100,000 as secondary antibody.

Comment: Target Species of Antibody: Human

Restrictions: For Research Use only

Handling

Format: Lyophilized

Reconstitution: Distilled water

Concentration: Lot specific

Buffer: Lyophilized from PBS with 2 % sucrose

Handling Advice: Avoid repeat freeze-thaw cycles.

Storage: 4 °C, -20 °C

Storage Comment: Long term: -20°C, the use of 50% glycerol is recommended if storing aliquots in -20°C for long term use (up to 1 year)

Short term (less than 1 week): 4°C. Avoid freeze-thaw cycles.

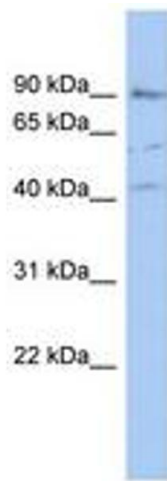


Image 1.