



[Go to Product page](#)

Datasheet for ABIN6742448
anti-EZH1 antibody (AA 180-229)

1 Image

Overview

Quantity:	100 µL
Target:	EZH1
Binding Specificity:	AA 180-229
Reactivity:	Human, Mouse, Rat, Guinea Pig, Horse, Bat, Chicken, Pig
Host:	Rabbit
Clonality:	Polyclonal
Conjugate:	This EZH1 antibody is un-conjugated
Application:	Western Blotting (WB)

Product Details

Immunogen:	Synthetic peptide located between aa180-229 of human EZH1 (Q92800, NP_001982). Percent identity by BLAST analysis: Human, Chimpanzee, Gorilla, Orangutan, Gibbon, Galago, Marmoset, Rat, Elephant, Bat, Horse, Guinea pig, Turkey, Chicken (100%), Monkey, Hamster, Dog, Bovine, Rabbit (92%), Opossum (85%), Mouse, Pig (84%). Type of Immunogen: Synthetic peptide
Specificity:	Human EZH1
Predicted Reactivity:	Percent identity by BLAST analysis: Human, Rat, Horse, Chicken (100%) Dog, Bovine, Rabbit (92%) Mouse, Pig (84%).
Purification:	Immunoaffinity purified

Target Details

Target: EZH1

Alternative Name: EZH1 ([EZH1 Products](#))

Background: Name/Gene ID: EZH1

Synonyms: EZH1, ENX-2, KIAA0388, Enhancer of zeste homolog 1, KMT6B

Gene ID: 2145

NCBI Accession: [NP_001982](#)

UniProt: [Q92800](#)

Application Details

Application Notes: Approved: WB (0.2 - 1 µg/mL)

Usage: Western Blot: Suggested dilution at 1 µg/mL in 5 % skim milk / PBS buffer, and HRP conjugated anti-Rabbit IgG should be diluted in 1: 50,000 - 100,000 as secondary antibody.

Comment: Target Species of Antibody: Human

Restrictions: For Research Use only

Handling

Format: Lyophilized

Reconstitution: Distilled water

Concentration: Lot specific

Buffer: Lyophilized from PBS with 2 % sucrose

Handling Advice: Avoid repeat freeze-thaw cycles.

Storage: 4 °C, -20 °C

Storage Comment: Long term: -20°C, the use of 50% glycerol is recommended if storing aliquots in -20°C for long term use (up to 1 year)

Short term (less than 1 week): 4°C. Avoid freeze-thaw cycles.

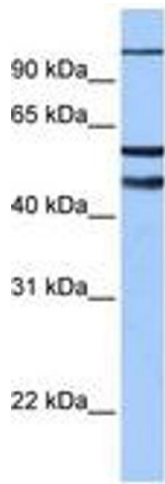


Image 1.