

Datasheet for ABIN6742449
anti-AFF3 antibody (AA 791-840)[Go to Product page](#)

1 Image

Overview

Quantity:	100 µL
Target:	AFF3
Binding Specificity:	AA 791-840
Reactivity:	Human
Host:	Rabbit
Clonality:	Polyclonal
Conjugate:	This AFF3 antibody is un-conjugated
Application:	Western Blotting (WB)

Product Details

Immunogen:	Synthetic peptide located between aa791-840 of human AFF3 (P51826, NP_002276). Percent identity by BLAST analysis: Human, Chimpanzee, Gorilla, Galago (100%), Gibbon, Monkey, Mouse, Rat, Elephant (92%), Marmoset, Bat (85%). Type of Immunogen: Synthetic peptide
Specificity:	Human AFF3
Predicted Reactivity:	Percent identity by BLAST analysis: Human (100%) Mouse, Rat (92%).
Purification:	Immunoaffinity purified

Target Details

Target:	AFF3
---------	------

Target Details

Alternative Name:	LAF4 / AFF3 (AFF3 Products)
Background:	Name/Gene ID: AFF3 Synonyms: AFF3, AF4/FMR2 family member 3, AF4/FMR2 family, member 3, LAF4, MLLT2-like, MLLT2-related protein, Lymphoid nuclear protein 4, Protein LAF-4
Gene ID:	3899
NCBI Accession:	NP_002276
UniProt:	P51826

Application Details

Application Notes:	Approved: WB (0.2 - 1 µg/mL) Usage: Western Blot: Suggested dilution at 1 µg/mL in 5 % skim milk / PBS buffer, and HRP conjugated anti-Rabbit IgG should be diluted in 1: 50,000 - 100,000 as secondary antibody.
Comment:	Target Species of Antibody: Human
Restrictions:	For Research Use only

Handling

Format:	Lyophilized
Reconstitution:	Distilled water
Concentration:	Lot specific
Buffer:	Lyophilized from PBS with 2 % sucrose
Handling Advice:	Avoid repeat freeze-thaw cycles.
Storage:	4 °C, -20 °C
Storage Comment:	Long term: -20°C, the use of 50% glycerol is recommended if storing aliquots in -20°C for long term use (up to 1 year) Short term (less than 1 week): 4°C. Avoid freeze-thaw cycles.

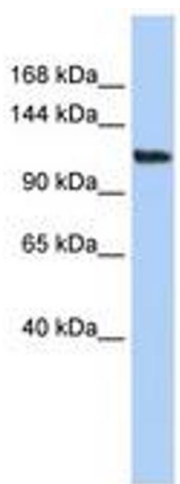


Image 1.