



[Go to Product page](#)

Datasheet for ABIN6742455
anti-MTF2 antibody (AA 359-408)

1 Image

Overview

Quantity:	100 µL
Target:	MTF2
Binding Specificity:	AA 359-408
Reactivity:	Human, Mouse, Rat, Dog, Horse, Rabbit, Pig, Bat, Monkey
Host:	Rabbit
Clonality:	Polyclonal
Conjugate:	This MTF2 antibody is un-conjugated
Application:	Western Blotting (WB)

Product Details

Immunogen:	Synthetic peptide located between aa359-408 of human MTF2 (Q9Y483, NP_031384). Percent identity by BLAST analysis: Human, Chimpanzee, Gorilla, Orangutan, Gibbon, Monkey, Marmoset, Mouse, Rat, Elephant, Panda, Dog, Bat, Rabbit, Horse, Pig (100%), Galago, Bovine (92%). Type of Immunogen: Synthetic peptide
Specificity:	Human MTF2
Predicted Reactivity:	Percent identity by BLAST analysis: Human, Mouse, Rat, Dog, Rabbit, Horse, Pig (100%) Bovine (92%).
Purification:	Immunoaffinity purified

Target Details

Target:	MTF2
Alternative Name:	MTF2 / PCL2 (MTF2 Products)
Background:	Name/Gene ID: MTF2 Synonyms: MTF2, DJ976013.2, HPCI2, Polycomb-like 2, M96, PCL2, Polycomb-like protein 2, Putative DNA binding protein, RP5-976013.1
Gene ID:	22823
NCBI Accession:	NP_031384
UniProt:	Q9Y483
Pathways:	Stem Cell Maintenance

Application Details

Application Notes:	Approved: WB (0.2 - 1 µg/mL) Usage: Western Blot: Suggested dilution at 1 µg/mL in 5 % skim milk / PBS buffer, and HRP conjugated anti-Rabbit IgG should be diluted in 1: 50,000 - 100,000 as secondary antibody.
Comment:	Target Species of Antibody: Human
Restrictions:	For Research Use only

Handling

Format:	Lyophilized
Reconstitution:	Distilled water
Concentration:	Lot specific
Buffer:	Lyophilized from PBS with 2 % sucrose
Handling Advice:	Avoid repeat freeze-thaw cycles.
Storage:	4 °C,-20 °C
Storage Comment:	Long term: -20°C, the use of 50% glycerol is recommended if storing aliquots in -20°C for long term use (up to 1 year) Short term (less than 1 week): 4°C. Avoid freeze-thaw cycles.

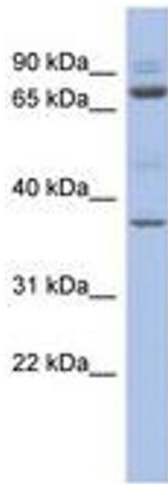


Image 1.