



[Go to Product page](#)

Datasheet for ABIN6742467
anti-CSRP1 antibody (AA 71-120)

1 Image

Overview

Quantity:	100 µL
Target:	CSRP1
Binding Specificity:	AA 71-120
Reactivity:	Human, Mouse, Rat, Dog, Guinea Pig, Rabbit, Hamster, Monkey
Host:	Rabbit
Clonality:	Polyclonal
Conjugate:	This CSRP1 antibody is un-conjugated
Application:	Western Blotting (WB)

Product Details

Immunogen:	Synthetic peptide located between aa71-120 of human CSRP1 (P21291, NP_004069). Percent identity by BLAST analysis: Human, Chimpanzee, Gorilla, Orangutan, Gibbon, Monkey, Galago, Marmoset, Mouse, Rat, Hamster, Dog, Rabbit, Opossum, Guinea pig, Platypus, Sablefish (100%), Panda, Bovine, Horse, Turkey, Chicken (92%), Elephant (91%), Lizard (90%), Zebra finch (84%), Stickleback, Zebrafish (83%). Type of Immunogen: Synthetic peptide
Specificity:	Human CSRP1
Predicted Reactivity:	Percent identity by BLAST analysis: Human, Mouse, Rat, Dog (100%) Bovine, Chicken (92%).
Purification:	Immunoaffinity purified

Target Details

Target:	CSRP1
Alternative Name:	CRP1 / CSRP1 (CSRP1 Products)
Background:	Name/Gene ID: CSRP1 Synonyms: CSRP1, CSRP, CYRP, Cysteine-rich protein 1, D1S181E, CRP1, LIM-domain protein
Gene ID:	1465
NCBI Accession:	NP_004069
UniProt:	P21291

Application Details

Application Notes:	Approved: WB (0.2 - 1 µg/mL) Usage: Western Blot: Suggested dilution at 1 µg/mL in 5 % skim milk / PBS buffer, and HRP conjugated anti-Rabbit IgG should be diluted in 1: 50,000 - 100,000 as secondary antibody.
Comment:	Target Species of Antibody: Human
Restrictions:	For Research Use only

Handling

Format:	Lyophilized
Reconstitution:	Distilled water
Concentration:	Lot specific
Buffer:	Lyophilized from PBS with 2 % sucrose
Handling Advice:	Avoid repeat freeze-thaw cycles.
Storage:	4 °C, -20 °C
Storage Comment:	Long term: -20°C, the use of 50% glycerol is recommended if storing aliquots in -20°C for long term use (up to 1 year) Short term (less than 1 week): 4°C. Avoid freeze-thaw cycles.

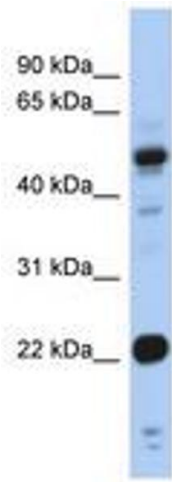


Image 1.