

Datasheet for ABIN6742477
anti-TRIM50 antibody (AA 360-409)



[Go to Product page](#)

1 Image

Overview

Quantity:	100 µL
Target:	TRIM50
Binding Specificity:	AA 360-409
Reactivity:	Human, Rat, Cow, Dog, Monkey
Host:	Rabbit
Clonality:	Polyclonal
Conjugate:	This TRIM50 antibody is un-conjugated
Application:	Western Blotting (WB)

Product Details

Immunogen:	Synthetic peptide located between aa360-409 of human TRIM50 (Q86XT4, NP_835226). Percent identity by BLAST analysis: Human, Chimpanzee, Gorilla, Gibbon, Monkey, Marmoset (100%), Mouse, Pig (92%), Rat, Panda, Dog, Bovine, Horse, Guinea pig, Chicken (85%). Type of Immunogen: Synthetic peptide
Specificity:	Human TRIM50
Predicted Reactivity:	Percent identity by BLAST analysis: Human (100%) Mouse, Pig (92%) Rat, Dog, Bovine (85%).
Purification:	Immunoaffinity purified

Target Details

Target:	TRIM50
---------	--------

Target Details

Alternative Name: TRIM50 / E3 Ubiquitin Ligase ([TRIM50 Products](#))

Background: Name/Gene ID: TRIM50

Synonyms: TRIM50, E3 ubiquitin ligase, TRIM50A, Tripartite motif-containing 50, Tripartite motif containing 50, Tripartite motif protein 50

Gene ID: 135892

NCBI Accession: [NP_835226](#)

UniProt: [Q86XT4](#)

Application Details

Application Notes: Approved: WB (0.2 - 1 µg/mL)

Usage: Western Blot: Suggested dilution at 1 µg/mL in 5 % skim milk / PBS buffer, and HRP conjugated anti-Rabbit IgG should be diluted in 1: 50,000 - 100,000 as secondary antibody.

Comment: Target Species of Antibody: Human

Restrictions: For Research Use only

Handling

Format: Lyophilized

Reconstitution: Distilled water

Concentration: Lot specific

Buffer: Lyophilized from PBS with 2 % sucrose

Handling Advice: Avoid repeat freeze-thaw cycles.

Storage: 4 °C, -20 °C

Storage Comment: Long term: -20°C, the use of 50% glycerol is recommended if storing aliquots in -20°C for long term use (up to 1 year)

Short term (less than 1 week): 4°C. Avoid freeze-thaw cycles.

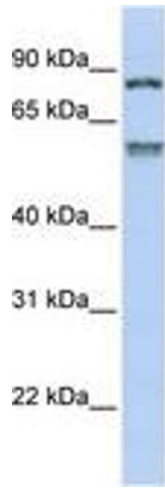


Image 1.