

Datasheet for ABIN6742484
anti-TBC1D10B antibody (AA 683-732)[Go to Product page](#)

1 Image

Overview

Quantity:	100 µL
Target:	TBC1D10B
Binding Specificity:	AA 683-732
Reactivity:	Human, Cow, Rat, Pig, Monkey
Host:	Rabbit
Clonality:	Polyclonal
Conjugate:	This TBC1D10B antibody is un-conjugated
Application:	Western Blotting (WB)

Product Details

Immunogen:	Synthetic peptide located between aa683-732 of human TBC1D10B (Q4KMP7, NP_056342). Percent identity by BLAST analysis: Human, Gorilla, Gibbon, Monkey, Marmoset (100%), Horse, Guinea pig (92%), Bovine (85%), Galago, Mouse, Rat, Elephant, Rabbit, Pig (84%). Type of Immunogen: Synthetic peptide
Specificity:	Human TBC1D10B
Predicted Reactivity:	Percent identity by BLAST analysis: Horse, Guinea pig (92%) Bovine (85%) Rat, Pig (84%).
Purification:	Immunoaffinity purified

Target Details

Target:	TBC1D10B
---------	----------

Target Details

Alternative Name:	TBC1D10B (TBC1D10B Products)
Background:	Name/Gene ID: TBC1D10B Synonyms: TBC1D10B, EPI64B, FP2461, TBC1 domain family member 10B, Rab27A-GAP-beta, DKFZP434P1750, Rab27A-GAPbeta, TBC1 domain family, member 10B
Gene ID:	26000
NCBI Accession:	NP_056342
UniProt:	Q4KMP7

Application Details

Application Notes:	Approved: WB (0.2 - 1 µg/mL) Usage: Western Blot: Suggested dilution at 1 µg/mL in 5 % skim milk / PBS buffer, and HRP conjugated anti-Rabbit IgG should be diluted in 1: 50,000 - 100,000 as secondary antibody.
Comment:	Target Species of Antibody: Human
Restrictions:	For Research Use only

Handling

Format:	Lyophilized
Reconstitution:	Distilled water
Concentration:	Lot specific
Buffer:	Lyophilized from PBS with 2 % sucrose
Handling Advice:	Avoid repeat freeze-thaw cycles.
Storage:	4 °C, -20 °C
Storage Comment:	Long term: -20°C, the use of 50% glycerol is recommended if storing aliquots in -20°C for long term use (up to 1 year) Short term (less than 1 week): 4°C. Avoid freeze-thaw cycles.

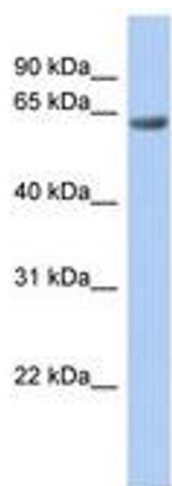


Image 1.