



[Go to Product page](#)

Datasheet for ABIN6742487  
**anti-ERGIC2 antibody (AA 252-301)**

1 Image

Overview

Quantity:	100 µL
Target:	ERGIC2
Binding Specificity:	AA 252-301
Reactivity:	Human, Mouse, Rat, Rabbit, Dog, Guinea Pig, Horse, Pig, Bat, Monkey, Hamster
Host:	Rabbit
Clonality:	Polyclonal
Conjugate:	This ERGIC2 antibody is un-conjugated
Application:	Western Blotting (WB)

Product Details

Immunogen:	Synthetic peptide located between aa252-301 of human ERGIC2 (Q96RQ1, NP_057654). Percent identity by BLAST analysis: Human, Chimpanzee, Gorilla, Gibbon, Monkey, Galago, Mouse, Rat, Hamster, Elephant, Panda, Dog, Bat, Rabbit, Horse, Pig, Opossum, Guinea pig (100%), Bovine, Turkey, Zebra finch, Chicken, Platypus (92%), Pike (91%), Lizard (85%).  Type of Immunogen: Synthetic peptide
Specificity:	Human ERGIC2
Predicted Reactivity:	Percent identity by BLAST analysis: Human, Mouse, Rat, Dog, Pig, Guinea pig (100%) Bovine, Chicken (92%).
Purification:	Immunoaffinity purified

## Target Details

---

Target: ERGIC2

Alternative Name: ERGIC2 ([ERGIC2 Products](#))

Background: Name/Gene ID: ERGIC2

Synonyms: ERGIC2, CD14 protein, Erv41, Cd002, CDA14, ERGIC and golgi 2, PTX1

Gene ID: 51290

NCBI Accession: [NP\\_057654](#)

UniProt: [Q96RQ1](#)

## Application Details

---

Application Notes: Approved: WB (0.2 - 1 µg/mL)

Usage: Western Blot: Suggested dilution at 1 µg/mL in 5 % skim milk / PBS buffer, and HRP conjugated anti-Rabbit IgG should be diluted in 1: 50,000 - 100,000 as secondary antibody.

Comment: Target Species of Antibody: Human

Restrictions: For Research Use only

## Handling

---

Format: Lyophilized

Reconstitution: Distilled water

Concentration: Lot specific

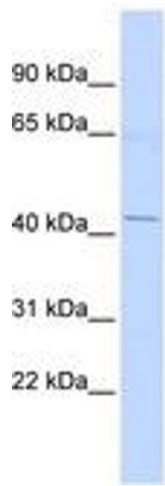
Buffer: Lyophilized from PBS with 2 % sucrose

Handling Advice: Avoid repeat freeze-thaw cycles.

Storage: 4 °C, -20 °C

Storage Comment: Long term: -20°C, the use of 50% glycerol is recommended if storing aliquots in -20°C for long term use (up to 1 year)

Short term (less than 1 week): 4°C. Avoid freeze-thaw cycles.



**Image 1.**