

Datasheet for ABIN6742502
anti-ADPGK antibody (AA 107-156)[Go to Product page](#)

1 Image

Overview

Quantity:	100 µL
Target:	ADPGK
Binding Specificity:	AA 107-156
Reactivity:	Human, Rat, Horse, Dog, Cow, Monkey, Rabbit
Host:	Rabbit
Clonality:	Polyclonal
Conjugate:	This ADPGK antibody is un-conjugated
Application:	Western Blotting (WB)

Product Details

Immunogen:	Synthetic peptide located between aa107-156 of human ADPGK (Q9BRR6, NP_112574). Percent identity by BLAST analysis: Human, Chimpanzee, Gibbon, Marmoset, Rat, Bovine (100%), Gorilla, Galago, Mouse, Hamster (92%), Guinea pig (91%), Bat, Horse (85%), Rabbit (83%). Type of Immunogen: Synthetic peptide
Specificity:	Human ADPGK
Predicted Reactivity:	Percent identity by BLAST analysis: Human, Bovine (100%) Mouse, Rat (92%) Guinea pig (91%) Horse (85%) Rabbit (83%).
Purification:	Immunoaffinity purified

Target Details

Target:	ADPGK
Alternative Name:	ADPGK (ADPGK Products)
Background:	Name/Gene ID: ADPGK Synonyms: ADPGK, ADP-dependent glucokinase, ADP-GK, ATP-dependent glucokinase, RbBP-35
Gene ID:	83440
NCBI Accession:	NP_112574
UniProt:	Q9BRR6

Application Details

Application Notes:	Approved: WB (0.2 - 1 µg/mL) Usage: Western Blot: Suggested dilution at 1 µg/mL in 5 % skim milk / PBS buffer, and HRP conjugated anti-Rabbit IgG should be diluted in 1: 50,000 - 100,000 as secondary antibody.
Comment:	Target Species of Antibody: Human
Restrictions:	For Research Use only

Handling

Format:	Lyophilized
Reconstitution:	Distilled water
Concentration:	Lot specific
Buffer:	Lyophilized from PBS with 2 % sucrose
Handling Advice:	Avoid repeat freeze-thaw cycles.
Storage:	4 °C, -20 °C
Storage Comment:	Long term: -20°C, the use of 50% glycerol is recommended if storing aliquots in -20°C for long term use (up to 1 year) Short term (less than 1 week): 4°C. Avoid freeze-thaw cycles.

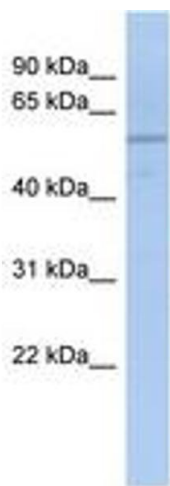


Image 1.