



[Go to Product page](#)

Datasheet for ABIN6742521  
**anti-RFX4 antibody (AA 144-193)**

1 Image

Overview

Quantity:	100 µL
Target:	RFX4
Binding Specificity:	AA 144-193
Reactivity:	Rat, Human, Mouse, Dog, Rabbit, Horse, Cow, Pig, Bat, Monkey
Host:	Rabbit
Clonality:	Polyclonal
Conjugate:	This RFX4 antibody is un-conjugated
Application:	Western Blotting (WB)

Product Details

Immunogen:	Synthetic peptide located between aa144-193 of human RFX4 (Q33E94, NP_998759). Percent identity by BLAST analysis: Human, Chimpanzee, Gorilla, Gibbon, Monkey, Galago, Marmoset, Elephant, Dog, Bovine, Bat, Rabbit, Horse, Pig, Opossum, Platypus (100%), Guinea pig, Turkey, Zebra finch, Chicken, Lizard, Xenopus, Zebrafish (92%), Mouse, Rat (85%).  Type of Immunogen: Synthetic peptide
Specificity:	Human RFX4
Predicted Reactivity:	Percent identity by BLAST analysis: Human, Dog, Bovine, Rabbit, Horse, Pig (100%) Guinea pig, Chicken, Zebrafish (92%) Mouse, Rat (85%).
Purification:	Immunoaffinity purified

## Target Details

---

Target: RFX4

Alternative Name: RFX4 ([RFX4 Products](#))

Background: Name/Gene ID: RFX4

Synonyms: RFX4, Regulatory factor X 4, Transcription factor RFX4, NYD-SP10

Gene ID: 5992

NCBI Accession: [NP\\_998759](#)

UniProt: [Q33E94](#)

## Application Details

---

Application Notes: Approved: WB (0.2 - 1 µg/mL)

Usage: Western Blot: Suggested dilution at 1 µg/mL in 5 % skim milk / PBS buffer, and HRP conjugated anti-Rabbit IgG should be diluted in 1: 50,000 - 100,000 as secondary antibody.

Not recommended for: IHC-P

Comment: Target Species of Antibody: Human

Restrictions: For Research Use only

## Handling

---

Format: Lyophilized

Reconstitution: Distilled water

Concentration: Lot specific

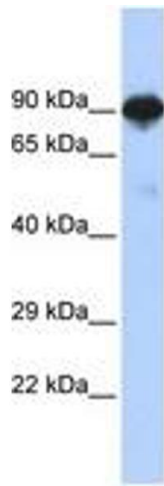
Buffer: Lyophilized from PBS with 2 % sucrose

Handling Advice: Avoid repeat freeze-thaw cycles.

Storage: 4 °C, -20 °C

Storage Comment: Long term: -20°C, the use of 50% glycerol is recommended if storing aliquots in -20°C for long term use (up to 1 year)

Short term (less than 1 week): 4°C. Avoid freeze-thaw cycles.



**Image 1.**