



[Go to Product page](#)

Datasheet for ABIN6742528  
**anti-HSF2BP antibody (AA 72-121)**

1 Image

Overview

Quantity:	100 µL
Target:	HSF2BP
Binding Specificity:	AA 72-121
Reactivity:	Human, Mouse, Dog, Cow, Rabbit
Host:	Rabbit
Clonality:	Polyclonal
Conjugate:	This HSF2BP antibody is un-conjugated
Application:	Western Blotting (WB)

Product Details

Immunogen:	Synthetic peptide located between aa72-121 of human HSF2BP (O75031, NP_008962). Percent identity by BLAST analysis: Human (100%), Gorilla, Gibbon (92%), Monkey, Mouse, Elephant, Panda, Bovine, Opossum (85%).  Type of Immunogen: Synthetic peptide
Specificity:	Human HSF2BP
Predicted Reactivity:	Percent identity by BLAST analysis: Human (100%) Mouse, Bovine (85%).
Purification:	Immunoaffinity purified

Target Details

Target:	HSF2BP
---------	--------

## Target Details

---

Alternative Name: HSF2BP ([HSF2BP Products](#))

Background: Name/Gene ID: HSF2BP

Synonyms: HSF2BP

Gene ID: 11077

NCBI Accession: [NP\\_008962](#)

UniProt: [O75031](#)

## Application Details

---

Application Notes: Approved: WB (0.2 - 1 µg/mL)

Usage: Western Blot: Suggested dilution at 1 µg/mL in 5 % skim milk / PBS buffer, and HRP conjugated anti-Rabbit IgG should be diluted in 1: 50,000 - 100,000 as secondary antibody.

Comment: Target Species of Antibody: Human

Restrictions: For Research Use only

## Handling

---

Format: Lyophilized

Reconstitution: Distilled water

Concentration: Lot specific

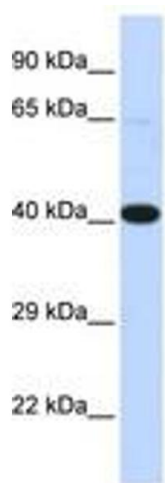
Buffer: Lyophilized from PBS with 2 % sucrose

Handling Advice: Avoid repeat freeze-thaw cycles.

Storage: 4 °C, -20 °C

Storage Comment: Long term: -20°C, the use of 50% glycerol is recommended if storing aliquots in -20°C for long term use (up to 1 year)

Short term (less than 1 week): 4°C. Avoid freeze-thaw cycles.



**Image 1.**