



[Go to Product page](#)

Datasheet for ABIN6742539
anti-GABRB1 antibody (AA 107-156)

1 Image

Overview

Quantity:	100 µL
Target:	GABRB1
Binding Specificity:	AA 107-156
Reactivity:	Human, Mouse, Rat, Cow, Monkey, Rabbit, Horse, Pig, Zebrafish (Danio rerio), Guinea Pig, Chicken, Bat, Xenopus laevis
Host:	Rabbit
Clonality:	Polyclonal
Conjugate:	This GABRB1 antibody is un-conjugated
Application:	Western Blotting (WB)

Product Details

Immunogen:	Synthetic peptide located between aa107-156 of human GABRB1 (P18505, NP_000803). Percent identity by BLAST analysis: Human, Gorilla, Orangutan, Gibbon, Monkey, Galago, Marmoset, Mouse, Rat, Elephant, Panda, Cat, Bovine, Bat, Rabbit, Horse, Pig, Opossum, Guinea pig, Turkey, Zebra finch, Chicken, Platypus, Lizard, Xenopus, Stickleback, Zebrafish (100%), Frog (92%). Type of Immunogen: Synthetic peptide
Specificity:	Human GABRB1
Predicted Reactivity:	Percent identity by BLAST analysis: Human, Mouse, Rabbit (100%).
Purification:	Immunoaffinity purified

Target Details

Target:	GABRB1
Alternative Name:	GABRB1 (GABRB1 Products)
Background:	Name/Gene ID: GABRB1 Subfamily: GABA A receptor Family: Ion Channel Synonyms: GABRB1, GABA(A) receptor, beta 1, GABA A receptor beta 1
Gene ID:	2560
NCBI Accession:	NP_000803
UniProt:	P18505

Application Details

Application Notes:	Approved: WB (0.2 - 1 µg/mL) Usage: Western Blot: Suggested dilution at 1 µg/mL in 5 % skim milk / PBS buffer, and HRP conjugated anti-Rabbit IgG should be diluted in 1: 50,000 - 100,000 as secondary antibody.
Comment:	Target Species of Antibody: Human
Restrictions:	For Research Use only

Handling

Format:	Lyophilized
Reconstitution:	Distilled water
Concentration:	Lot specific
Buffer:	Lyophilized from PBS with 2 % sucrose
Handling Advice:	Avoid repeat freeze-thaw cycles.
Storage:	4 °C,-20 °C
Storage Comment:	Long term: -20°C, the use of 50% glycerol is recommended if storing aliquots in -20°C for long term use (up to 1 year) Short term (less than 1 week): 4°C. Avoid freeze-thaw cycles.

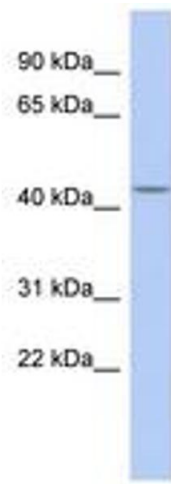


Image 1.