

Datasheet for ABIN6742548
anti-KCNJ4 antibody (C-Term)[Go to Product page](#)

1 Image

Overview

Quantity:	100 µL
Target:	KCNJ4
Binding Specificity:	C-Term
Reactivity:	Human, Mouse, Rat, Rabbit, Dog, Guinea Pig, Pig, Hamster
Host:	Rabbit
Clonality:	Polyclonal
Conjugate:	This KCNJ4 antibody is un-conjugated
Application:	Western Blotting (WB)

Product Details

Immunogen:	Synthetic peptide from C-Terminus of human KCNJ4 (P48050, NP_004972). Percent identity by BLAST analysis: Human, Gorilla, Galago, Mouse, Rat, Hamster, Panda, Dog, Rabbit, Pig, Guinea pig (100%), Elephant, Bat (92%). Type of Immunogen: Synthetic peptide
Specificity:	Human KCNJ4 / Kir2.3
Predicted Reactivity:	Percent identity by BLAST analysis: Mouse, Rat, Dog, Rabbit, Guinea pig (100%).
Purification:	Immunoaffinity purified

Target Details

Target:	KCNJ4
---------	-------

Target Details

Alternative Name:	KCNJ4 / Kir2.3 (KCNJ4 Products)
Background:	Name/Gene ID: KCNJ4 Subfamily: Potassium channel - inward-rectifying Family: Ion Channel Synonyms: KCNJ4, IRK3, Kir2.3, HIR, HIRK2, HRK1, IRK-3, Hippocampal inward rectifier
Gene ID:	3761
NCBI Accession:	NP_004972
UniProt:	P48050

Application Details

Application Notes:	Approved: WB (0.2 - 1 µg/mL) Usage: Western Blot: Suggested dilution at 1 µg/mL in 5 % skim milk / PBS buffer, and HRP conjugated anti-Rabbit IgG should be diluted in 1: 50,000 - 100,000 as secondary antibody.
Comment:	Target Species of Antibody: Human
Restrictions:	For Research Use only

Handling

Format:	Lyophilized
Reconstitution:	Distilled water
Concentration:	Lot specific
Buffer:	Lyophilized from PBS with 2 % sucrose
Handling Advice:	Avoid repeat freeze-thaw cycles.
Storage:	4 °C, -20 °C
Storage Comment:	Long term: -20°C, the use of 50% glycerol is recommended if storing aliquots in -20°C for long term use (up to 1 year) Short term (less than 1 week): 4°C. Avoid freeze-thaw cycles.

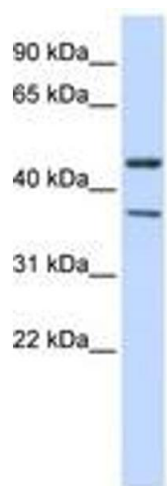


Image 1.