

Datasheet for ABIN6742549
anti-VDAC3 antibody (AA 35-84)[Go to Product page](#)

1 Image

Overview

Quantity:	100 µL
Target:	VDAC3
Binding Specificity:	AA 35-84
Reactivity:	Human, Rat, Mouse, Rabbit, Cow, Dog, Goat, Horse, Pig, Monkey, Xenopus laevis, Bat
Host:	Rabbit
Clonality:	Polyclonal
Conjugate:	This VDAC3 antibody is un-conjugated
Application:	Western Blotting (WB)

Product Details

Immunogen:	Synthetic peptide located between aa35-84 of human VDAC3 (Q9Y277, NP_005653). Percent identity by BLAST analysis: Human, Chimpanzee, Gorilla, Orangutan, Gibbon, Monkey, Galago, Marmoset, Mouse, Rat, Goat, Elephant, Panda, Dog, Bovine, Bat, Rabbit, Horse, Pig, Opossum, Xenopus (100%), Guinea pig, Turkey, Zebra finch, Chicken, Platypus, Salmon, Zebrafish (92%), Hamster (84%). Type of Immunogen: Synthetic peptide
Specificity:	Human VDAC3
Predicted Reactivity:	Percent identity by BLAST analysis: Human, Mouse, Rat, Dog, Bovine, Goat, Rabbit, Pig, Xenopus (100%) Chicken, Zebrafish (92%).
Purification:	Immunoaffinity purified

Target Details

Target:	VDAC3
Alternative Name:	VDAC3 (VDAC3 Products)
Background:	Name/Gene ID: VDAC3 Subfamily: VDAC porin Family: Ion Channel Synonyms: VDAC3, HD-VDAC3, MVDAC3, HVDAC3, VDAC-3, RVDAC3
Gene ID:	7419
NCBI Accession:	NP_005653
UniProt:	Q9Y277

Application Details

Application Notes:	Approved: WB (0.2 - 1 µg/mL) Usage: Western Blot: Suggested dilution at 1 µg/mL in 5 % skim milk / PBS buffer, and HRP conjugated anti-Rabbit IgG should be diluted in 1: 50,000 - 100,000 as secondary antibody.
Comment:	Target Species of Antibody: Human
Restrictions:	For Research Use only

Handling

Format:	Lyophilized
Reconstitution:	Distilled water
Concentration:	Lot specific
Buffer:	Lyophilized from PBS with 2 % sucrose
Handling Advice:	Avoid repeat freeze-thaw cycles.
Storage:	4 °C,-20 °C
Storage Comment:	Long term: -20°C, the use of 50% glycerol is recommended if storing aliquots in -20°C for long term use (up to 1 year) Short term (less than 1 week): 4°C. Avoid freeze-thaw cycles.

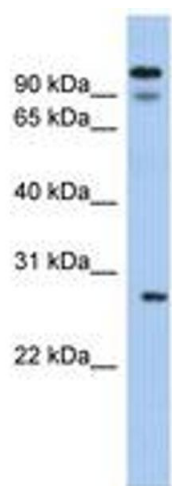


Image 1.