

Datasheet for ABIN6742557 anti-TRPM4 antibody (AA 359-408)



[Go to Product page](#)

1 Image

Overview

Quantity:	100 µL
Target:	TRPM4
Binding Specificity:	AA 359-408
Reactivity:	Human, Mouse, Rat, Cow, Dog, Horse, Monkey
Host:	Rabbit
Clonality:	Polyclonal
Conjugate:	This TRPM4 antibody is un-conjugated
Application:	Western Blotting (WB)

Product Details

Immunogen:	<p>Synthetic peptide located between aa359-408 of human TRPM4 (Q8TD43, NP_060106).</p> <p>Percent identity by BLAST analysis: Human, Chimpanzee, Gorilla, Gibbon, Monkey, Galago, Mouse, Rat (100%), Panda, Guinea pig (92%), Dog, Horse (85%).</p> <p>Type of Immunogen: Synthetic peptide</p>
Specificity:	Human TRPM4
Predicted Reactivity:	Percent identity by BLAST analysis: Human, Mouse, Rat (100%) Guinea pig (92%) Dog, Horse (85%).
Purification:	Immunoaffinity purified

Target Details

Target:	TRPM4
Alternative Name:	TRPM4 (TRPM4 Products)
Background:	Name/Gene ID: TRPM4 Subfamily: Calcium channel - TRP Family: Ion Channel Synonyms: TRPM4, HTRPM4, LTrpC-4, PFHB1B, Melastatin-4, TRPM4B, LTrpC4
Gene ID:	54795
NCBI Accession:	NP_060106
UniProt:	Q8TD43
Pathways:	Regulation of Leukocyte Mediated Immunity , Production of Molecular Mediator of Immune Response

Application Details

Application Notes:	Approved: WB (0.2 - 1 µg/mL) Usage: Western Blot: Suggested dilution at 1 µg/mL in 5 % skim milk / PBS buffer, and HRP conjugated anti-Rabbit IgG should be diluted in 1: 50,000 - 100,000 as secondary antibody. Not recommended for: IHC-P
Comment:	Target Species of Antibody: Human
Restrictions:	For Research Use only

Handling

Format:	Lyophilized
Reconstitution:	Distilled water
Concentration:	Lot specific
Buffer:	Lyophilized from PBS with 2 % sucrose
Handling Advice:	Avoid repeat freeze-thaw cycles.
Storage:	4 °C, -20 °C

Handling

Storage Comment: Long term: -20°C, the use of 50% glycerol is recommended if storing aliquots in -20°C for long term use (up to 1 year)

Short term (less than 1 week): 4°C. Avoid freeze-thaw cycles.

Images

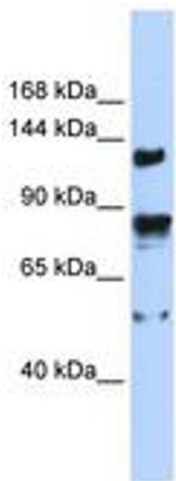


Image 1.