

Datasheet for ABIN6742558
anti-TPCN1 antibody (AA 71-120)[Go to Product page](#)

1 Image

Overview

Quantity:	100 µL
Target:	TPCN1
Binding Specificity:	AA 71-120
Reactivity:	Human, Guinea Pig, Horse, Rabbit, Cow, Dog, Monkey
Host:	Rabbit
Clonality:	Polyclonal
Conjugate:	This TPCN1 antibody is un-conjugated
Application:	Western Blotting (WB)

Product Details

Immunogen:	Synthetic peptide located between aa71-120 of human TPCN1 (Q9ULQ1, NP_060371). Percent identity by BLAST analysis: Human, Chimpanzee, Gorilla, Gibbon, Monkey, Galago, Marmoset, Dog, Bovine, Rabbit, Horse, Opossum, Guinea pig,(100%), Mouse, Rat (92%).
Specificity:	Human TPCN1
Predicted Reactivity:	Percent identity by BLAST analysis: Human, Dog, Bovine, Rabbit, Horse, Pig, Guinea pig, Chicken (100%) Mouse (92%).
Purification:	Immunoaffinity purified

Target Details

Target:	TPCN1
Alternative Name:	TPC1 / TPCN1 (TPCN1 Products)

Target Details

Background:	Name/Gene ID: TPCN1
	Subfamily: Calcium channel - other
	Family: Ion Channel
	Synonyms: TPCN1, KIAA1169, Two-pore segment channel 1, TPC1, Two pore segment channel 1, Two-pore channel 1
Gene ID:	53373
NCBI Accession:	NP_060371
UniProt:	Q9ULQ1

Application Details

Application Notes:	Approved: WB (0.2 - 1 µg/mL)
	Usage: Western Blot: Suggested dilution at 1 µg/mL in 5 % skim milk / PBS buffer, and HRP conjugated anti-Rabbit IgG should be diluted in 1: 50,000 - 100,000 as secondary antibody.
	Not recommended for: IHC-P
Comment:	Target Species of Antibody: Human
Restrictions:	For Research Use only

Handling

Format:	Lyophilized
Reconstitution:	Distilled water
Concentration:	Lot specific
Buffer:	Lyophilized from PBS with 2 % sucrose
Handling Advice:	Avoid repeat freeze-thaw cycles.
Storage:	4 °C, -20 °C
Storage Comment:	Long term: -20°C, the use of 50% glycerol is recommended if storing aliquots in -20°C for long term use (up to 1 year)
	Short term (less than 1 week): 4°C. Avoid freeze-thaw cycles.

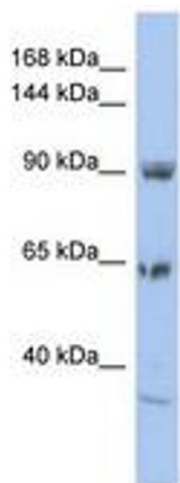


Image 1.