

Datasheet for ABIN6742564  
**anti-KCNK12 antibody (AA 360-409)**[Go to Product page](#)

## 1 Image

## Overview

Quantity:	100 µL
Target:	KCNK12
Binding Specificity:	AA 360-409
Reactivity:	Human, Rat, Mouse, Rabbit, Cow, Dog, Guinea Pig, Monkey, Pig, Bat
Host:	Rabbit
Clonality:	Polyclonal
Conjugate:	This KCNK12 antibody is un-conjugated
Application:	Western Blotting (WB)

## Product Details

Immunogen:	Synthetic peptide located between aa360-409 of human KCNK12 (Q9HB15, NP_071338). Percent identity by BLAST analysis: Human, Chimpanzee, Gorilla, Monkey, Galago, Mouse, Rat, Panda, Dog, Bovine, Bat, Rabbit, Pig, Opossum, Guinea pig (100%), Zebra finch, Xenopus, Zebrafish (92%), Elephant, Horse, Chicken (85%), Gibbon, Marmoset, Stickleback (84%).  Type of Immunogen: Synthetic peptide
Specificity:	Human KCNK12
Predicted Reactivity:	Percent identity by BLAST analysis: Mouse, Dog, Bovine, Rabbit, Pig, Guinea pig (100%).
Purification:	Immunoaffinity purified

## Target Details

Target:	KCNK12
Alternative Name:	KCNK12 ( <a href="#">KCNK12 Products</a> )
Background:	Name/Gene ID: KCNK12 Subfamily: Potassium channel - two pore Family: Ion Channel  Synonyms: KCNK12, K2p12.1, THIK-2, THIK2
Gene ID:	56660
NCBI Accession:	<a href="#">NP_071338</a>
UniProt:	<a href="#">Q9HB15</a>

## Application Details

Application Notes:	Approved: WB (0.2 - 1 µg/mL)  Usage: Western Blot: Suggested dilution at 1 µg/mL in 5 % skim milk / PBS buffer, and HRP conjugated anti-Rabbit IgG should be diluted in 1: 50,000 - 100,000 as secondary antibody.
Comment:	Target Species of Antibody: Human
Restrictions:	For Research Use only

## Handling

Format:	Lyophilized
Reconstitution:	Distilled water
Concentration:	Lot specific
Buffer:	Lyophilized from PBS with 2 % sucrose
Handling Advice:	Avoid repeat freeze-thaw cycles.
Storage:	4 °C, -20 °C
Storage Comment:	Long term: -20°C, the use of 50% glycerol is recommended if storing aliquots in -20°C for long term use (up to 1 year) Short term (less than 1 week): 4°C. Avoid freeze-thaw cycles.

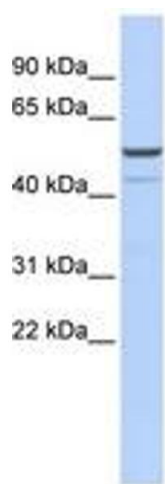


Image 1.