

Datasheet for ABIN6742574  
**anti-P2RX2 antibody (AA 36-85)**[Go to Product page](#)

## 1 Image

## Overview

Quantity:	100 µL
Target:	P2RX2
Binding Specificity:	AA 36-85
Reactivity:	Human, Horse, Dog, Cow, Monkey, Pig
Host:	Rabbit
Clonality:	Polyclonal
Conjugate:	This P2RX2 antibody is un-conjugated
Application:	Western Blotting (WB)

## Product Details

Immunogen:	Synthetic peptide located between aa36-85 of human P2RX2 (Q9UBL9-3, NP_057402). Percent identity by BLAST analysis: Human, Monkey (100%), Mouse, Rat, Rabbit, Guinea pig (92%), Panda, Dog, Bovine, Horse, Pig, Opossum, Turkey, Chicken (85%).  Type of Immunogen: Synthetic peptide
Specificity:	Human P2RX2 / P2X2
Predicted Reactivity:	Percent identity by BLAST analysis: Human (100%) Mouse, Rat, Rabbit, Guinea pig (92%) Dog, Bovine, Horse, Pig, Chicken (85%).
Purification:	Immunoaffinity purified

## Target Details

Target:	P2RX2
Alternative Name:	P2RX2 / P2X2 ( <a href="#">P2RX2 Products</a> )
Background:	Name/Gene ID: P2RX2 Subfamily: P2X receptor Family: Ion Channel  Synonyms: P2RX2, ATP receptor, p2X2, p2X Receptor, subunit 2, Purinergic receptor, p2RX2, p2X receptor 2, p2X purinoceptor 2, p2X2 purinoceptor
Gene ID:	22953
NCBI Accession:	<a href="#">NP_057402</a>
UniProt:	<a href="#">Q9UBL9</a>
Pathways:	<a href="#">Skeletal Muscle Fiber Development</a> , <a href="#">Positive Regulation of Endopeptidase Activity</a>

## Application Details

Application Notes:	Approved: WB (0.2 - 1 µg/mL)  Usage: Western Blot: Suggested dilution at 1 µg/mL in 5 % skim milk / PBS buffer, and HRP conjugated anti-Rabbit IgG should be diluted in 1: 50,000 - 100,000 as secondary antibody.
Comment:	Target Species of Antibody: Human
Restrictions:	For Research Use only

## Handling

Format:	Lyophilized
Reconstitution:	Distilled water
Concentration:	Lot specific
Buffer:	Lyophilized from PBS with 2 % sucrose
Handling Advice:	Avoid repeat freeze-thaw cycles.
Storage:	4 °C, -20 °C
Storage Comment:	Long term: -20°C, the use of 50% glycerol is recommended if storing aliquots in -20°C for long term use (up to 1 year)

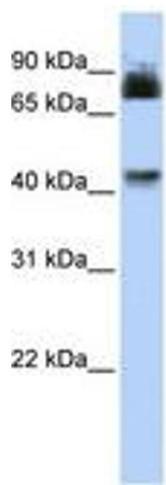
Handling

---

Short term (less than 1 week): 4°C. Avoid freeze-thaw cycles.

Images

---



**Image 1.**